

Product datasheet for **AP17742PU-N**

SF2 (SRSF1) (C-term) Rabbit Polyclonal Antibody

Product data:

Product Type:	Primary Antibodies
Applications:	IHC, WB
Recommended Dilution:	ELISA: 1/1,000. Western blotting: 1/50-1/100. Immunohistochemistry: 1/50-1/100.
Reactivity:	Human
Host:	Rabbit
Clonality:	Polyclonal
Immunogen:	KLH conjugated synthetic peptide between 165~194 amino acids from the C-terminal region of Human SFRS1
Specificity:	This antibody recognizes SFRS1.
Formulation:	PBS with 0.09% (W/V) Sodium Azide as preservative State: Liquid purified Ig fraction
Concentration:	lot specific
Purification:	Saturated Ammonium Sulfate (SAS) precipitation
Conjugation:	Unconjugated
Storage:	Store the antibody undiluted at 2-8°C for one month or (in aliquots) at -20°C for longer. Avoid repeated freezing and thawing.
Stability:	Shelf life: one year from despatch.
Gene Name:	serine/arginine-rich splicing factor 1
Database Link:	Entrez Gene 6426 Human Q07955
Background:	SFRS1 is a member of the arginine/serine-rich splicing factor protein family, and functions in both constitutive and alternative pre-mRNA splicing. The protein binds to pre-mRNA transcripts and components of the spliceosome, and can either activate or repress splicing depending on the location of the pre-mRNA binding site. The protein's ability to activate splicing is regulated by phosphorylation and interactions with other splicing factor associated proteins.



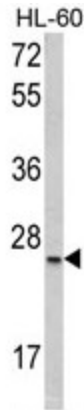
[View online »](#)

Synonyms: ASF, ASF-1, Alternative-splicing factor 1, SF2P33

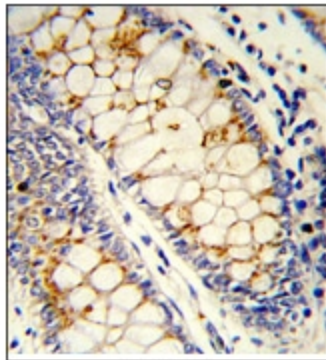
Protein Families: Stem cell - Pluripotency

Protein Pathways: Spliceosome

Product images:



Western blot analysis of SF2 (SRSF1) Antibody (C-term) in HL-60 cell line lysates (35ug/lane). SF2 (SRSF1) (arrow) was detected using the purified Pab.



Formalin-Fixed, Paraffin-Embedded Human colon carcinoma reacted with SF2 (SRSF1) Antibody (C-term), which was Peroxidase-conjugated to the secondary antibody, followed by DAB staining. This data demonstrates the use of this antibody for immunohistochemistry. Clinical relevance has not been evaluated.