

Product datasheet for **AP17741PU-N**

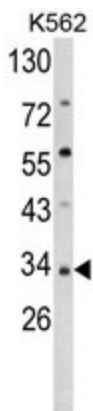
SFRP5 (Center) Rabbit Polyclonal Antibody

Product data:

Product Type:	Primary Antibodies
Applications:	WB
Recommended Dilution:	ELISA: 1/1,000. Western blotting: 1/100 - 1/500.
Reactivity:	Human
Host:	Rabbit
Clonality:	Polyclonal
Immunogen:	KLH conjugated synthetic peptide selected from the Center region of human SFRP5
Specificity:	This antibody reacts to SFRP5.
Formulation:	PBS with 0.09% (W/V) sodium azide State: Liquid purified Ig
Concentration:	lot specific
Purification:	Affinity chromatography on Protein A
Conjugation:	Unconjugated
Storage:	Store the antibody undiluted at 2-8°C for one month or (in aliquots) at -20°C for longer. Avoid repeated freezing and thawing.
Stability:	Shelf life: one year from despatch.
Gene Name:	secreted frizzled related protein 5
Database Link:	Entrez Gene 6425 Human Q5T4F7
Background:	Secreted frizzled-related protein 5 (SFRP5) is a member of the SFRP family that contains a cysteine-rich domain homologous to the putative Wnt-binding site of Frizzled proteins. SFRPs act as soluble modulators of Wnt signaling. SFRP5 and SFRP1 may be involved in determining the polarity of photoreceptor cells in the retina.
Synonyms:	SFRP-5, SARP3, SARP-3, FRP1B, FRP-1b
Protein Families:	Adult stem cells, Druggable Genome, ES Cell Differentiation/IPS, Secreted Protein
Protein Pathways:	Wnt signaling pathway



[View online »](#)

Product images:

Western blot analysis of SFRP5 Antibody (Center) in K562 cell line lysates (35ug/lane). SFRP5 (arrow) was detected using the purified Pab.