

Product datasheet for **AP17740PU-N**

KMT5A (Center) Rabbit Polyclonal Antibody

Product data:

Product Type:	Primary Antibodies
Applications:	WB
Recommended Dilution:	ELISA: 1/1,000. Western blotting: 1/50 - 1/100.
Reactivity:	Human
Host:	Rabbit
Clonality:	Polyclonal
Immunogen:	KLH conjugated synthetic peptide selected from the Center region of human SETD8
Specificity:	This antibody reacts to SETD8.
Formulation:	PBS with 0.09% (W/V) sodium azide State: Liquid purified Ig
Concentration:	lot specific
Purification:	Saturated Ammonium Sulfate (SAS) precipitation
Conjugation:	Unconjugated
Storage:	Store the antibody undiluted at 2-8°C for one month or (in aliquots) at -20°C for longer. Avoid repeated freezing and thawing.
Stability:	Shelf life: one year from despatch.
Gene Name:	lysine methyltransferase 5A
Database Link:	Entrez Gene 387893 Human Q9NQR1
Background:	SETD8 is a histone methyltransferase that specifically monomethylates 'Lys-20' of histone H4. H4 'Lys-20' monomethylation is enriched during mitosis and represents a specific tag for epigenetic transcriptional repression. The protein mainly functions in euchromatin regions, thereby playing a central role in the silencing of euchromatic genes. It is required for cell proliferation, probably by contributing to the maintenance of proper higher order structure of DNA during mitosis. It is also involved in chromosome condensation and proper cytokinesis. Nucleosomes are preferred as substrate compared to free histones.
Synonyms:	SET8, PRSET7, PR-Set7, KMT5A

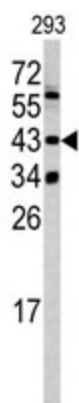


[View online »](#)

Protein Families: Druggable Genome

Protein Pathways: Lysine degradation

Product images:



Western blot analysis of SETD8 antibody (Center) in 293 cell line lysates (35ug/lane). SETD8 (arrow) was detected using the purified Pab.