

Product datasheet for **AP17737PU-N**

PEDF (SERPINF1) (N-term) Rabbit Polyclonal Antibody

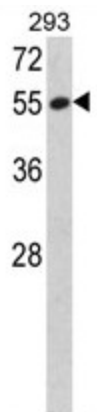
Product data:

Product Type:	Primary Antibodies
Applications:	WB
Recommended Dilution:	ELISA: 1/1,000. Western blotting: 1/50 - 1/100.
Reactivity:	Human
Host:	Rabbit
Clonality:	Polyclonal
Immunogen:	KLH conjugated synthetic peptide selected from the N-terminal region of human SERPINF1
Specificity:	This antibody reacts to SERPINF1.
Formulation:	PBS with 0.09% (W/V) sodium azide State: Liquid purified Ig
Concentration:	lot specific
Purification:	Saturated Ammonium Sulfate (SAS) precipitation
Conjugation:	Unconjugated
Storage:	Store the antibody undiluted at 2-8°C for one month or (in aliquots) at -20°C for longer. Avoid repeated freezing and thawing.
Stability:	Shelf life: one year from despatch.
Gene Name:	serpin family F member 1
Database Link:	Entrez Gene 5176 Human P36955
Background:	SERPINF1 is a member of the serpin family. Serpins are a group of serine protease inhibitors, some of which have also been reported to exhibit neurotrophic activity.
Synonyms:	Pigment epithelium-derived factor, Serpin-F1, EPC-1



[View online »](#)

Product images:



Western blot analysis of SERPINF1 Antibody (N-term) in 293 cell line lysates (35ug/lane). SERPINF1 (arrow) was detected using the purified Pab.