

## Product datasheet for **AP17731PU-N**

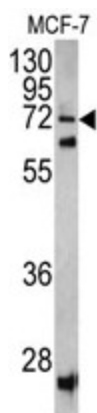
### SCFD1 (C-term) Rabbit Polyclonal Antibody

#### Product data:

Product Type:	Primary Antibodies
Applications:	WB
Recommended Dilution:	ELISA: 1/1,000. Western blotting: 1/50 - 1/100.
Reactivity:	Human
Host:	Rabbit
Clonality:	Polyclonal
Immunogen:	KLH conjugated synthetic peptide selected from the C-terminal region of human SCFD1
Specificity:	This antibody reacts to SCFD1.
Formulation:	PBS with 0.09% (W/V) sodium azide State: Liquid purified Ig
Concentration:	lot specific
Purification:	Saturated Ammonium Sulfate (SAS) precipitation
Conjugation:	Unconjugated
Storage:	Store the antibody undiluted at 2-8°C for one month or (in aliquots) at -20°C for longer. Avoid repeated freezing and thawing.
Stability:	Shelf life: one year from despatch.
Gene Name:	sec1 family domain containing 1
Database Link:	<a href="#">Entrez Gene 23256 Human Q8WVM8</a>
Background:	SCFD1 is involved in vesicular transport between the endoplasmic reticulum and the Golgi.
Synonyms:	SLY1 homolog, Sly1p, C14orf163, KIAA0917, STXBP1L2



[View online »](#)

**Product images:**

Western blot analysis of SCFD1 antibody (C-term) in MCF-7 cell line lysates (35ug/lane). SCFD1 (arrow) was detected using the purified Pab.