

Product datasheet for **AP17727PU-N**

RYK (Center) Rabbit Polyclonal Antibody

Product data:

Product Type:	Primary Antibodies
Applications:	WB
Recommended Dilution:	ELISA: 1/1,000. Western blotting: 1/50 - 1/100.
Reactivity:	Human
Host:	Rabbit
Clonality:	Polyclonal
Immunogen:	KLH conjugated synthetic peptide selected from the Center region of human RYK
Specificity:	This antibody reacts to Tyrosine-protein kinase RYK.
Formulation:	PBS with 0.09% (W/V) sodium azide State: Liquid purified Ig
Concentration:	lot specific
Purification:	Saturated Ammonium Sulfate (SAS) precipitation
Conjugation:	Unconjugated
Storage:	Store the antibody undiluted at 2-8°C for one month or (in aliquots) at -20°C for longer. Avoid repeated freezing and thawing.
Stability:	Shelf life: one year from despatch.
Gene Name:	receptor-like tyrosine kinase
Database Link:	Entrez Gene 6259 Human P34925



[View online »](#)

Background:

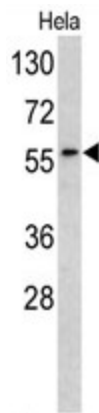
RYK is an atypical member of the family of growth factor receptor protein tyrosine kinases, differing from other members at a number of conserved residues in the activation and nucleotide binding domains. This gene product belongs to a subfamily whose members do not appear to be regulated by phosphorylation in the activation segment. It has been suggested that mediation of biological activity by recruitment of a signaling-competent auxiliary protein may occur through an as yet uncharacterized mechanism. A nine nucleotide insertion in some transcripts results in the SLG variant. It is not established whether this is a product of alternative splicing or a second gene, since evidence for a second gene or pseudogene on chromosome 17 exists.

Synonyms:

JTK5A

Protein Families:

Druggable Genome, Protein Kinase, Transmembrane

Product images:


Western blot analysis of RYK antibody (Center C397) in HeLa cell line lysates (35ug/lane). RYK (arrow) was detected using the purified Pab.