

Product datasheet for **AP17721PU-N**

RRM2 (Center) Rabbit Polyclonal Antibody

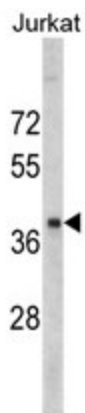
Product data:

Product Type:	Primary Antibodies
Applications:	WB
Recommended Dilution:	ELISA: 1/1,000. Western blotting: 1/50 - 1/100.
Reactivity:	Human
Host:	Rabbit
Clonality:	Polyclonal
Immunogen:	KLH conjugated synthetic peptide selected from the Center region of human RRM2
Specificity:	This antibody reacts to RRM2.
Formulation:	PBS with 0.09% (W/V) sodium azide State: Liquid purified Ig
Concentration:	lot specific
Purification:	Saturated Ammonium Sulfate (SAS) precipitation
Conjugation:	Unconjugated
Storage:	Store the antibody undiluted at 2-8°C for one month or (in aliquots) at -20°C for longer. Avoid repeated freezing and thawing.
Stability:	Shelf life: one year from despatch.
Gene Name:	ribonucleotide reductase regulatory subunit M2
Database Link:	Entrez Gene 6241 Human P31350
Background:	RRM2 is one of two non-identical subunits for ribonucleotide reductase. This reductase catalyzes the formation of deoxyribonucleotides from ribonucleotides. Synthesis of the protein (M2) is regulated in a cell-cycle dependent fashion.
Synonyms:	Ribonucleotide reductase small subunit, Ribonucleotide reductase small chain
Protein Families:	Druggable Genome
Protein Pathways:	Glutathione metabolism, Metabolic pathways, p53 signaling pathway, Purine metabolism, Pyrimidine metabolism



[View online »](#)

Product images:



Western blot analysis of RRM2 antibody (Center) in Jurkat cell line lysates (35ug/lane). RRM2 (arrow) was detected using the purified Pab.