

Product datasheet for **AP17713PU-N**

RGPI (C-term) Rabbit Polyclonal Antibody

Product data:

Product Type:	Primary Antibodies
Applications:	WB
Recommended Dilution:	ELISA: 1/1,000. Western blotting: 1/50 – 1/100.
Reactivity:	Human, Mouse
Host:	Rabbit
Clonality:	Polyclonal
Immunogen:	KLH conjugated synthetic peptide selected from the C-terminal region of human RGPI
Specificity:	This antibody reacts to RGPI.
Formulation:	PBS with 0.09% (W/V) sodium azide State: Liquid purified Ig
Concentration:	lot specific
Purification:	Saturated Ammonium Sulfate (SAS) precipitation
Conjugation:	Unconjugated
Storage:	Store the antibody undiluted at 2–8°C for one month or (in aliquots) at –20°C for longer. Avoid repeated freezing and thawing.
Stability:	Shelf life: one year from despatch.
Gene Name:	RGPI homolog, RAB6A GEF complex partner 1
Database Link:	Entrez Gene 9827 Human Q92546

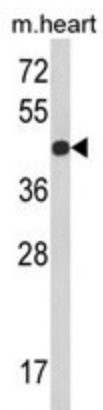


Background:

Retrograde golgi transport homolog 1 (RGPI) is the mammalian homolog to the yeast RGPI, and is thought to be a potential Golgi recycling factor. The protein forms a tight complex with RIC1 and this complex binds Ypt6p and stimulates guanine nucleotide exchange. RGPI yeast mutants exhibit defects in retrograde trafficking that are similar to those seen in yeast, with mutations in other retrograde Golgi transport proteins. It is expected that RGPI plays a similar role in mammalian cells.

Synonyms:

KIAA0258

Product images:


Western blot analysis of RGPI Antibody (C-term) in mouse heart tissue lysates (35ug/lane). RGPI (arrow) was detected using the purified Pab.