

Product datasheet for **AP17710PU-N**

RBM3 (C-term) Rabbit Polyclonal Antibody

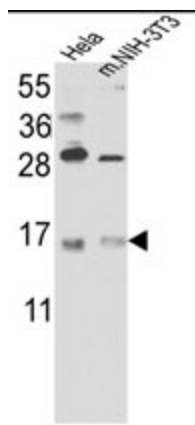
Product data:

Product Type:	Primary Antibodies
Applications:	WB
Recommended Dilution:	ELISA: 1/1,000. Western blotting: 1/50 - 1/100.
Reactivity:	Human, Mouse
Host:	Rabbit
Clonality:	Polyclonal
Immunogen:	KLH conjugated synthetic peptide selected from the C-terminal region of human RBM3
Specificity:	This antibody reacts to RBM3.
Formulation:	PBS with 0.09% (W/V) sodium azide State: Liquid purified Ig
Concentration:	lot specific
Purification:	Saturated Ammonium Sulfate (SAS) precipitation
Conjugation:	Unconjugated
Storage:	Store the antibody undiluted at 2-8°C for one month or (in aliquots) at -20°C for longer. Avoid repeated freezing and thawing.
Stability:	Shelf life: one year from despatch.
Gene Name:	RNA binding motif (RNP1, RRM) protein 3
Database Link:	Entrez Gene 19652 Mouse Entrez Gene 5935 Human P98179
Background:	RBM3 is a member of the glycine-rich RNA-binding protein family and a protein with one RNA recognition motif (RRM) domain. Expression of this protein is induced by cold shock and low oxygen tension.
Synonyms:	RBM-3, RNPL, RNA-binding protein 3, RNA-binding motif protein 3



[View online »](#)

Product images:



Western blot analysis of RBM3 Antibody (C-term) in HeLa cell line lysates and mouse NIH-3T3 tissues lysates (35ug/lane). RBM3 (arrow) was detected using the purified Pab.