

## Product datasheet for **AP17709PU-N**

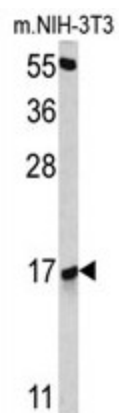
### **RBM3 (Center) Rabbit Polyclonal Antibody**

#### **Product data:**

<b>Product Type:</b>	Primary Antibodies
<b>Applications:</b>	WB
<b>Recommended Dilution:</b>	ELISA: 1/1,000. Western blotting: 1/50 - 1/100.
<b>Reactivity:</b>	Human
<b>Host:</b>	Rabbit
<b>Clonality:</b>	Polyclonal
<b>Immunogen:</b>	KLH conjugated synthetic peptide selected from the Center region of human RBM3
<b>Specificity:</b>	This antibody reacts to RBM3.
<b>Formulation:</b>	PBS with 0.09% (W/V) sodium azide State: Liquid purified Ig
<b>Concentration:</b>	lot specific
<b>Purification:</b>	Saturated Ammonium Sulfate (SAS) precipitation
<b>Conjugation:</b>	Unconjugated
<b>Storage:</b>	Store the antibody undiluted at 2-8°C for one month or (in aliquots) at -20°C for longer. Avoid repeated freezing and thawing.
<b>Stability:</b>	Shelf life: one year from despatch.
<b>Gene Name:</b>	RNA binding motif (RNP1, RRM) protein 3
<b>Database Link:</b>	<a href="#">Entrez Gene 5935 Human P98179</a>
<b>Background:</b>	RBM3 is a member of the glycine-rich RNA-binding protein family and a protein with one RNA recognition motif (RRM) domain. Expression of this protein is induced by cold shock and low oxygen tension.
<b>Synonyms:</b>	RBM-3, RNPL, RNA-binding protein 3, RNA-binding motif protein 3



[View online »](#)

**Product images:**

Western blot analysis of RBM3 antibody (Center) in NIH-3T3 cell line lysates (35ug/lane). RBM3 (arrow) was detected using the purified Pab.