

Product datasheet for **AP17706PU-N**

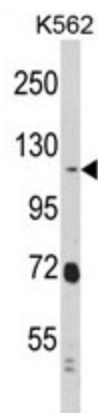
RAIN (RASIP1) (Center) Rabbit Polyclonal Antibody

Product data:

Product Type:	Primary Antibodies
Applications:	WB
Recommended Dilution:	ELISA: 1/1,000. Western blotting: 1/50 - 1/100.
Reactivity:	Human
Host:	Rabbit
Clonality:	Polyclonal
Immunogen:	KLH conjugated synthetic peptide selected from the Center region of human RASIP1
Specificity:	This antibody reacts to RASIP1.
Formulation:	PBS with 0.09% (W/V) sodium azide State: Liquid purified Ig
Concentration:	lot specific
Purification:	Saturated Ammonium Sulfate (SAS) precipitation
Conjugation:	Unconjugated
Storage:	Store the antibody undiluted at 2-8°C for one month or (in aliquots) at -20°C for longer. Avoid repeated freezing and thawing.
Stability:	Shelf life: one year from despatch.
Gene Name:	Ras interacting protein 1
Database Link:	Entrez Gene 54922 Human Q5U651
Background:	RASIP1 may act as effector for Golgi-bound HRAS and other Ras-like proteins. May promote HRAS-mediated transformation.
Synonyms:	Ras-interacting protein 1



[View online »](#)

Product images:

Western blot analysis of RASIP1 Antibody (Center) in K562 cell line lysates (35ug/lane). RASIP1 (arrow) was detected using the purified Pab.