

## Product datasheet for **AP17705PU-N**

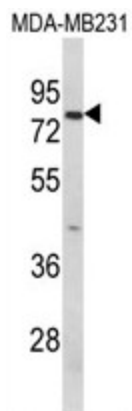
### **RANBP9 (Center) Rabbit Polyclonal Antibody**

#### **Product data:**

<b>Product Type:</b>	Primary Antibodies
<b>Applications:</b>	WB
<b>Recommended Dilution:</b>	ELISA: 1/1,000. Western blotting: 1/50 - 1/100.
<b>Reactivity:</b>	Human
<b>Host:</b>	Rabbit
<b>Clonality:</b>	Polyclonal
<b>Immunogen:</b>	KLH conjugated synthetic peptide selected from the Center region of human RANBP9
<b>Specificity:</b>	This antibody reacts to RANBP9.
<b>Formulation:</b>	PBS with 0.09% (W/V) sodium azide State: Liquid purified Ig
<b>Concentration:</b>	lot specific
<b>Purification:</b>	Saturated Ammonium Sulfate (SAS) precipitation
<b>Conjugation:</b>	Unconjugated
<b>Storage:</b>	Store the antibody undiluted at 2-8°C for one month or (in aliquots) at -20°C for longer. Avoid repeated freezing and thawing.
<b>Stability:</b>	Shelf life: one year from despatch.
<b>Gene Name:</b>	RAN binding protein 9
<b>Database Link:</b>	<a href="#">Entrez Gene 10048 Human Q96S59</a>
<b>Background:</b>	RANBP9 is a protein that binds RAN, a small GTP binding protein belonging to the RAS superfamily that is essential for the translocation of RNA and proteins through the nuclear pore complex. The protein has also been shown to interact with several other proteins, including met proto-oncogene, homeodomain interacting protein kinase 2, androgen receptor, and cyclin-dependent kinase 11.
<b>Synonyms:</b>	Ran-binding protein 9, Ran-binding protein M, BPM90, BPM-L, RANBPM
<b>Protein Families:</b>	Druggable Genome



[View online »](#)

**Product images:**

Western blot analysis of RANBP9 Antibody (Center) in MDA-MB231 cell line lysates (35ug/lane). RANBP9 (arrow) was detected using the purified Pab.