

Product datasheet for **AP17699PU-N**

MOK protein kinase (MOK) (Center) Rabbit Polyclonal Antibody

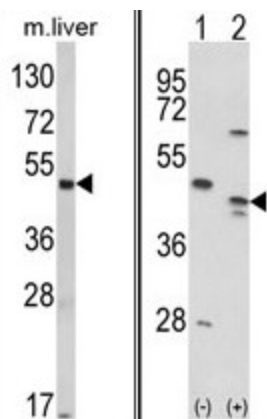
Product data:

Product Type:	Primary Antibodies
Applications:	WB
Recommended Dilution:	ELISA: 1/1,000. Western blotting: 1/100 - 1/500.
Reactivity:	Human, Mouse
Host:	Rabbit
Clonality:	Polyclonal
Immunogen:	KLH conjugated synthetic peptide selected from the Center region of human RAGE
Specificity:	This antibody reacts to RAGE.
Formulation:	PBS with 0.09% (W/V) sodium azide State: Liquid purified Ig
Concentration:	lot specific
Purification:	Affinity chromatography on Protein A
Conjugation:	Unconjugated
Storage:	Store the antibody undiluted at 2-8°C for one month or (in aliquots) at -20°C for longer. Avoid repeated freezing and thawing.
Stability:	Shelf life: one year from despatch.
Gene Name:	MOK protein kinase
Database Link:	Entrez Gene 26448 Mouse Entrez Gene 5891 Human Q9UQ07
Background:	RAGE is able to phosphorylate several exogenous substrates and to undergo autophosphorylation.
Synonyms:	MOK, RAGE1, MOK protein kinase, Renal tumor antigen 1, RAGE-1
Protein Families:	Druggable Genome, Protein Kinase



[View online »](#)

Product images:



(LEFT) Western blot analysis of RAGE Antibody (Center) in mouse liver tissue lysates (35ug/lane). RAGE (arrow) was detected using the purified Pab. (RIGHT) Western blot analysis of RAGE (arrow) using rabbit polyclonal RAGE Antibody (Center). 293 cell lysates (2 ug/lane) either nontransfected (Lane 1) or transiently transfected with the RAGE gene (Lane 2).