

## Product datasheet for **AP17693PU-N**

### **RAB13 (Center) Rabbit Polyclonal Antibody**

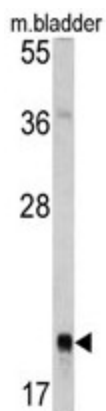
#### **Product data:**

|                              |   |
|------------------------------|---|
| <b>Product Type:</b>         | Primary Antibodies  |
| <b>Applications:</b>         | WB  |
| <b>Recommended Dilution:</b> | ELISA: 1/1,000.<br>Western blotting: 1/50 - 1/100.  |
| <b>Reactivity:</b>           | Human, Mouse  |
| <b>Host:</b>                 | Rabbit  |
| <b>Clonality:</b>            | Polyclonal  |
| <b>Immunogen:</b>            | KLH conjugated synthetic peptide selected from the Center region of human RAB13   |
| <b>Specificity:</b>          | This antibody reacts to RAB13.  |
| <b>Formulation:</b>          | PBS with 0.09% (W/V) sodium azide<br>State: Liquid purified Ig  |
| <b>Concentration:</b>        | lot specific  |
| <b>Purification:</b>         | Saturated Ammonium Sulfate (SAS) precipitation  |
| <b>Conjugation:</b>          | Unconjugated  |
| <b>Storage:</b>              | Store the antibody undiluted at 2-8°C for one month or (in aliquots) at -20°C for longer.<br>Avoid repeated freezing and thawing. |
| <b>Stability:</b>            | Shelf life: one year from despatch.   |
| <b>Gene Name:</b>            | RAB13, member RAS oncogene family   |
| <b>Database Link:</b>        | <a href="#">Entrez Gene 5872 Human P51153</a>   |
| <b>Background:</b>           | RAB13 can participate in polarized transport, in the assembly and/or the activity of tight junctions.                             |
| <b>Synonyms:</b>             | Rab-13, GIG4  |
| <b>Protein Families:</b>     | Druggable Genome  |
| <b>Protein Pathways:</b>     | Tight junction  |



[View online »](#)

## Product images:



Western blot analysis of RAB13 antibody (Center) in mouse bladder tissue lysates (35ug/lane). RAB13 (arrow) was detected using the purified Pab.