

Product datasheet for **AP17690PU-N**

SHP2 (PTPN11) (C-term) Rabbit Polyclonal Antibody

Product data:

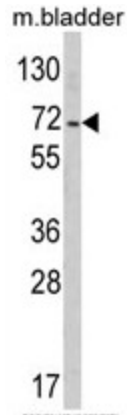
Product Type:	Primary Antibodies
Applications:	WB
Recommended Dilution:	ELISA: 1/1,000. Western blotting: 1/50 - 1/100.
Reactivity:	Human, Mouse
Host:	Rabbit
Clonality:	Polyclonal
Immunogen:	KLH conjugated synthetic peptide selected from the C-terminal region of human PTPN11
Specificity:	This antibody reacts to PTPN11.
Formulation:	PBS with 0.09% (W/V) sodium azide State: Liquid purified Ig
Concentration:	lot specific
Purification:	Saturated Ammonium Sulfate (SAS) precipitation
Conjugation:	Unconjugated
Storage:	Store the antibody undiluted at 2-8°C for one month or (in aliquots) at -20°C for longer. Avoid repeated freezing and thawing.
Stability:	Shelf life: one year from despatch.
Gene Name:	protein tyrosine phosphatase, non-receptor type 11
Database Link:	Entrez Gene 19247 Mouse Entrez Gene 5781 Human Q06124
Background:	PTPN11 is a member of the protein tyrosine phosphatase (PTP) family. PTPs are known to be signaling molecules that regulate a variety of cellular processes including cell growth, differentiation, mitotic cycle, and oncogenic ansformation. This PTP contains two tandem Src homology-2 domains, which function as phospho-tyrosine binding domains and mediate the interaction of this PTP with its substrates.
Synonyms:	SHPTP2, PTP-1D, PTP-2C, SH-PTP2, SHP-2, Shp2, SH-PTP3
Protein Families:	Druggable Genome, Phosphatase



[View online »](#)

Protein Pathways:

Adipocytokine signaling pathway, Chronic myeloid leukemia, Epithelial cell signaling in Helicobacter pylori infection, Jak-STAT signaling pathway, Leukocyte transendothelial migration, Natural killer cell mediated cytotoxicity, Neurotrophin signaling pathway, Renal cell carcinoma

Product images:

Western blot analysis of PTPN11 Antibody (C-term) in mouse bladder tissue lysates (35ug/lane). PTPN11 (arrow) was detected using the purified Pab.