

Product datasheet for **AP17684PU-N**

PSMD7 (N-term) Rabbit Polyclonal Antibody

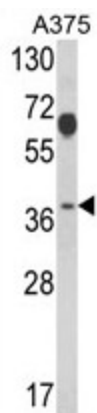
Product data:

Product Type:	Primary Antibodies
Applications:	WB
Recommended Dilution:	ELISA: 1/1,000. Western blotting: 1/50 - 1/100.
Reactivity:	Human
Host:	Rabbit
Clonality:	Polyclonal
Immunogen:	KLH conjugated synthetic peptide selected from the N-terminal region of human PSMD7
Specificity:	This antibody reacts to PSMD7.
Formulation:	PBS with 0.101% (W/V) sodium azide State: Liquid purified Ig
Concentration:	lot specific
Purification:	Saturated Ammonium Sulfate (SAS) precipitation
Conjugation:	Unconjugated
Storage:	Store the antibody undiluted at 2-8°C for one month or (in aliquots) at -20°C for longer. Avoid repeated freezing and thawing.
Stability:	Shelf life: one year from despatch.
Gene Name:	proteasome 26S subunit, non-ATPase 7
Database Link:	Entrez Gene 5713 Human P51665
Background:	PSMD7 acts as a regulatory subunit of the 26S proteasome which is involved in the ATP-dependent degradation of ubiquitinated proteins.
Synonyms:	26S proteasome non-ATPase regulatory subunit 7, 26S proteasome regulatory subunit RPN8, 26S proteasome regulatory subunit S12, Proteasome 19S S12, MOV34L
Protein Families:	Druggable Genome, Protease
Protein Pathways:	Proteasome



[View online »](#)

Product images:



Western blot analysis of PSMD7 Antibody (N-term) in A375 cell line lysates (35ug/lane). PSMD7 (arrow) was detected using the purified Pab.