

Product datasheet for **AP17682PU-N**

PSMD13 (C-term) Rabbit Polyclonal Antibody

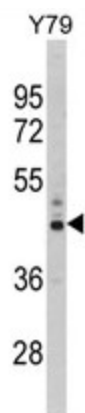
Product data:

| | |
|-----------------------|---|
| Product Type: | Primary Antibodies |
| Applications: | WB |
| Recommended Dilution: | ELISA: 1/1,000. Western blotting: 1/100 - 1/500. |
| Reactivity: | Human |
| Host: | Rabbit |
| Clonality: | Polyclonal |
| Immunogen: | KLH conjugated synthetic peptide selected from the C-terminal region of human PSMD13 |
| Specificity: | This antibody reacts to PSMD13. |
| Formulation: | PBS with 0.09% (W/V) sodium azide State: Liquid purified Ig |
| Concentration: | lot specific |
| Purification: | Affinity chromatography on Protein A |
| Conjugation: | Unconjugated |
| Storage: | Store the antibody undiluted at 2-8°C for one month or (in aliquots) at -20°C for longer. Avoid repeated freezing and thawing. |
| Stability: | Shelf life: one year from despatch. |
| Gene Name: | proteasome 26S subunit, non-ATPase 13 |
| Database Link: | Entrez Gene 5719 Human Q9UNM6 |
| Background: | PSMD13 acts as a regulatory subunit of the 26S proteasome which is involved in the ATP-dependent degradation of ubiquitinated proteins. |
| Synonyms: | 26S proteasome non-ATPase regulatory subunit 13, 26S proteasome regulatory subunit RPN9, 26S proteasome regulatory subunit S11, 26S proteasome regulatory subunit p40.5 |
| Protein Pathways: | Proteasome |



[View online »](#)

Product images:



Western blot analysis of PSMD13 Antibody (C-term) in Y79 cell line lysates (35ug/lane). PSMD13 (arrow) was detected using the purified Pab.