

Product datasheet for **AP17672PU-N**

NPEPPS (C-term) Rabbit Polyclonal Antibody

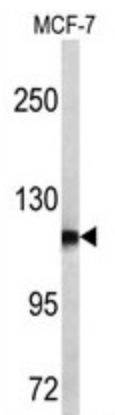
Product data:

Product Type:	Primary Antibodies
Applications:	WB
Recommended Dilution:	ELISA: 1/1,000. Western blotting: 1/50 - 1/100.
Reactivity:	Human
Host:	Rabbit
Clonality:	Polyclonal
Immunogen:	KLH conjugated synthetic peptide selected from the C-terminal region of humanPSA
Specificity:	This antibody reacts to NPEPPS.
Formulation:	PBS with 0.09% (W/V) sodium azide State: Liquid purified Ig
Concentration:	lot specific
Purification:	Saturated Ammonium Sulfate (SAS) precipitation
Conjugation:	Unconjugated
Storage:	Store the antibody undiluted at 2-8°C for one month or (in aliquots) at -20°C for longer. Avoid repeated freezing and thawing.
Stability:	Shelf life: one year from despatch.
Gene Name:	aminopeptidase puromycin sensitive
Database Link:	Entrez Gene 9520 Human P55786
Background:	PSA is the puromycin-sensitive aminopeptidase, a zinc metallopeptidase which hydrolyzes amino acids from the N-terminus of its substrate. The protein has been localized to both the cytoplasm and to cellular membranes. This enzyme degrades enkaphalins in the brain, and studies in mouse suggest that it is involved in proteolytic events regulating the cell cycle.
Synonyms:	PSA
Protein Families:	Druggable Genome, Protease



[View online »](#)

Product images:



Western blot analysis of PSA antibody (C-term) in MCF-7 cell line lysates (35ug/lane). PSA (arrow) was detected using the purified Pab.