

Product datasheet for **AP17667PU-N**

PRKACA (N-term) Rabbit Polyclonal Antibody

Product data:

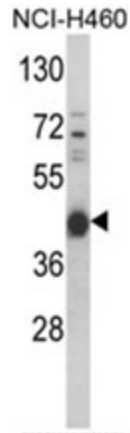
Product Type:	Primary Antibodies
Applications:	ELISA, FC, IHC, WB
Recommended Dilution:	Western Blot: 1/1,000. IHC-P: 1/50 - 1/100. Flow Cytometry: 1/10 - 1/50.
Reactivity:	Human
Host:	Rabbit
Clonality:	Polyclonal
Immunogen:	KLH conjugated synthetic peptide between 67-94 amino acids from the N-terminal(K282) region of human PRKACA
Specificity:	This antibody reacts to PRKACA.
Formulation:	PBS with 0.09% (W/V) sodium azide State: Liquid purified Ig
Concentration:	lot specific
Purification:	Saturated Ammonium Sulfate (SAS) precipitation
Conjugation:	Unconjugated
Storage:	Store the antibody undiluted at 2-8°C for one month or (in aliquots) at -20°C for longer. Avoid repeated freezing and thawing.
Stability:	Shelf life: one year from despatch.
Gene Name:	Homo sapiens protein kinase cAMP-activated catalytic subunit alpha (PRKACA), transcript variant 1
Database Link:	Entrez Gene 5566 Human P17612
Background:	PRKACA phosphorylates a large number of substrates in the cytoplasm and the nucleus.
Synonyms:	PKA C-alpha
Protein Families:	Druggable Genome, Protein Kinase



[View online »](#)

Protein Pathways:

Apoptosis, Calcium signaling pathway, Chemokine signaling pathway, Dilated cardiomyopathy, Gap junction, GnRH signaling pathway, Hedgehog signaling pathway, Insulin signaling pathway, Long-term potentiation, MAPK signaling pathway, Melanogenesis, Olfactory transduction, Oocyte meiosis, Prion diseases, Progesterone-mediated oocyte maturation, Taste transduction, Vascular smooth muscle contraction, Vibrio cholerae infection, Wnt signaling pathway

Product images:

Western blot analysis of PRKACA Antibody (N-term K82) in NCI-H460 cell line lysates (35ug/lane). PRKACA (arrow) was detected using the purified Pab.