

Product datasheet for **AP17665PU-N**

Peroxiredoxin 6 (PRDX6) (C-term) Rabbit Polyclonal Antibody

Product data:

Product Type:	Primary Antibodies
Applications:	FC, IHC, WB
Recommended Dilution:	ELISA: 1/1,000. Western blotting: 1/50 - 1/100. Immunohistochemistry: 1/50-1/100 (Formalin-fixed and paraffin-embedded). Flow cytometry: 1/10-1/50.
Reactivity:	Human
Host:	Rabbit
Clonality:	Polyclonal
Immunogen:	KLH conjugated synthetic peptide selected from the C-terminal region of human PRDX6.
Specificity:	This antibody reacts to Peroxiredoxin-6 (PRDX6).
Formulation:	PBS with 0.09% (W/V) sodium azide State: Liquid purified Ig
Concentration:	lot specific
Purification:	Saturated Ammonium Sulfate (SAS) precipitation
Conjugation:	Unconjugated
Storage:	Store the antibody undiluted at 2-8°C for one month or (in aliquots) at -20°C for longer. Avoid repeated freezing and thawing.
Stability:	Shelf life: one year from despatch.
Gene Name:	peroxiredoxin 6
Database Link:	Entrez Gene 9588 Human P30041
Background:	PRDX6 is a member of the thiol-specific antioxidant protein family. This protein is a bifunctional enzyme with two distinct active sites. It is involved in redox regulation of the cell; it can reduce H ₂ O ₂ and short chain organic, fatty acid, and phospholipid hydroperoxides. It may play a role in the regulation of phospholipid turnover as well as in protection against oxidative injury.
Synonyms:	PRDX-6, Prx6, Prx-6, 1-Cys PRX, aiPLA2, NSGPx, AOP2, AOP-2, KIAA0106

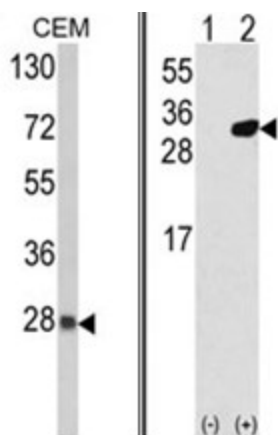


[View online >](#)

Protein Families: Druggable Genome

Protein Pathways: Metabolic pathways, Methane metabolism, Phenylalanine metabolism

Product images:



(LEFT) Western blot analysis of PRDX6 Antibody (C-term) in CEM cell line lysates (35ug/lane). PRDX6 (arrow) was detected using the purified Pab. (RIGHT) Western blot analysis of PRDX6 (arrow) using rabbit polyclonal PRDX6 Antibody (C-term). 293 cell lysates (2 ug/lane) either nontransfected (Lane 1) or transiently transfected with the PRDX6 gene (Lane 2).