

Product datasheet for **AP17660PU-N**

Peroxiredoxin 1 (PRDX1) (Center) Rabbit Polyclonal Antibody

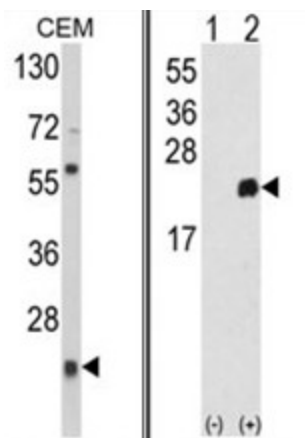
Product data:

Product Type:	Primary Antibodies
Applications:	WB
Recommended Dilution:	ELISA: 1/1,000. Western blotting: 1/50 - 1/100.
Reactivity:	Human
Host:	Rabbit
Clonality:	Polyclonal
Immunogen:	KLH conjugated synthetic peptide selected from the Center region of human PRDX1
Specificity:	This antibody reacts to Peroxiredoxin-1 (PRDX1).
Formulation:	PBS with 0.09% (W/V) sodium azide State: Liquid purified Ig
Concentration:	lot specific
Purification:	Saturated Ammonium Sulfate (SAS) precipitation
Conjugation:	Unconjugated
Storage:	Store the antibody undiluted at 2-8°C for one month or (in aliquots) at -20°C for longer. Avoid repeated freezing and thawing.
Stability:	Shelf life: one year from despatch.
Gene Name:	peroxiredoxin 1
Database Link:	Entrez Gene 5052 Human Q06830
Background:	PRDX1 is a member of the peroxiredoxin family of antioxidant enzymes, which reduce hydrogen peroxide and alkyl hydroperoxides. This protein may play an antioxidant protective role in cells, and may contribute to the antiviral activity of CD8(+) T-cells. This protein may have a proliferative effect and play a role in cancer development or progression.
Synonyms:	PRDX-1, Prx1, Prx-1, PAG, NKEF-A, NKEFA PAGA, PAGB, TDPX2



[View online »](#)

Product images:



(LEFT) Western blot analysis of PRDX1 Antibody (Center) in CEM cell line lysates (35ug/lane). PRDX1 (arrow) was detected using the purified Pab. (RIGHT) Western blot analysis of PRDX1 (arrow) using rabbit polyclonal PRDX1 Antibody (Center). 293 cell lysates (2 ug/lane) either nontransfected (Lane 1) or transiently transfected with the PRDX1 gene (Lane 2).