

Product datasheet for **AP17657PU-N**

Cyclophilin A (PPIA) (N-term) Rabbit Polyclonal Antibody

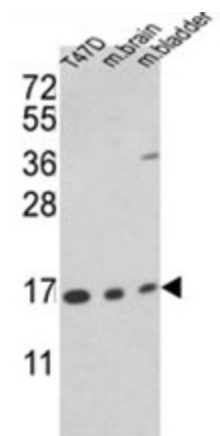
Product data:

Product Type:	Primary Antibodies
Applications:	WB
Recommended Dilution:	ELISA: 1/1,000. Western blotting: 1/50 - 1/100.
Reactivity:	Human, Mouse
Host:	Rabbit
Clonality:	Polyclonal
Immunogen:	KLH conjugated synthetic peptide selected from the N-terminal region of human PPIA
Specificity:	This antibody reacts to Cyclophilin A.
Formulation:	PBS with 0.09% (W/V) sodium azide State: Liquid purified Ig
Concentration:	lot specific
Purification:	Saturated Ammonium Sulfate (SAS) precipitation
Conjugation:	Unconjugated
Storage:	Store the antibody undiluted at 2-8°C for one month or (in aliquots) at -20°C for longer. Avoid repeated freezing and thawing.
Stability:	Shelf life: one year from despatch.
Gene Name:	peptidylprolyl isomerase A
Database Link:	Entrez Gene 268373 Mouse Entrez Gene 5478 Human P62937
Background:	PPIA is a member of the peptidyl-prolyl cis-trans isomerase (PPIase) family. PPIases catalyze the cis-trans isomerization of proline imidic peptide bonds in oligopeptides and accelerate the folding of proteins. This protein is a cyclosporin binding-protein and may play a role in cyclosporin A-mediated immunosuppression. The protein can also interact with several HIV proteins, including p55 gag, Vpr, and capsid protein, and has been shown to be necessary for the formation of infectious HIV virions.
Synonyms:	PPIA, CYPA, Cyclosporin A-binding protein, Cyclophilin-A, Peptidyl-prolyl cis-trans isomerase A, PPIase A, Rotamase A, EC=5.2.1.8



[View online »](#)

Product images:



Western blot analysis of PPIA Antibody (N-term) in T47D cell line and mouse brain, bladder tissue lysates (35ug/lane). PPIA (arrow) was detected using the purified Pab. (2ug/ml)