

Product datasheet for **AP17652PU-N**

Plzf (ZBTB16) (C-term) Rabbit Polyclonal Antibody

Product data:

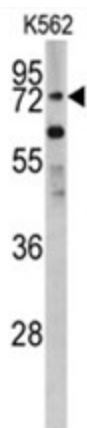
Product Type:	Primary Antibodies
Applications:	WB
Recommended Dilution:	ELISA: 1/1,000. Western blotting: 1/50 - 1/100.
Reactivity:	Human
Host:	Rabbit
Clonality:	Polyclonal
Immunogen:	KLH conjugated synthetic peptide selected from the C-terminal region of human PLZF
Specificity:	This antibody reacts to ZBTB16.
Formulation:	PBS with 0.09% (W/V) sodium azide State: Liquid purified Ig
Concentration:	lot specific
Purification:	Saturated Ammonium Sulfate (SAS) precipitation
Conjugation:	Unconjugated
Storage:	Store the antibody undiluted at 2-8°C for one month or (in aliquots) at -20°C for longer. Avoid repeated freezing and thawing.
Stability:	Shelf life: one year from despatch.
Gene Name:	zinc finger and BTB domain containing 16
Database Link:	Entrez Gene 7704 Human Q05516
Background:	PLZF is a member of the Krueppel C2H2-type zinc-finger protein family and a zinc finger transcription factor that contains nine Kruppel-type zinc finger domains at the carboxyl terminus. This protein is located in the nucleus, is involved in cell cycle progression, and interacts with a histone deacetylase. Specific instances of aberrant gene rearrangement at this locus have been associated with acute promyelocytic leukemia (APL).
Synonyms:	PLZF, ZNF145
Protein Families:	Druggable Genome, Transcription Factors



[View online »](#)

Protein Pathways: Acute myeloid leukemia, Pathways in cancer

Product images:



Western blot analysis of PLZF antibody (C-term) in K562 cell line lysates (35ug/lane). PLZF (arrow) was detected using the purified Pab.