

Product datasheet for **AP17647PU-N**

PI4KB (Center) Rabbit Polyclonal Antibody

Product data:

Product Type:	Primary Antibodies
Applications:	FC, IHC, WB
Recommended Dilution:	Western blotting: 1/1000. Flow Cytometry: 1/10-1/50. Immunohistochemistry on Paraffin Sections: 1/50-1/100.
Reactivity:	Bovine, Human, Mouse, Rat, Zebrafish
Host:	Rabbit
Isotype:	Ig
Clonality:	Polyclonal
Immunogen:	KLH conjugated synthetic peptide between 519-548 amino acids from the Center region of Human PIK4CB.
Specificity:	This antibody recognizes PIK4CB.
Formulation:	PBS with 0.09% (W/V) Sodium Azide State: Purified State: Liquid purified Ig fraction
Concentration:	lot specific
Purification:	Saturated Ammonium Sulfate (SAS) precipitation followed by dialysis against PBS.
Conjugation:	Unconjugated
Storage:	Store undiluted at 2-8°C for one month or (in aliquots) at -20°C for longer. Avoid repeated freezing and thawing.
Stability:	Shelf life: one year from despatch.
Gene Name:	phosphatidylinositol 4-kinase beta
Database Link:	Entrez Gene 81747 Rat Entrez Gene 107650 Mouse Entrez Gene 5298 Human Q9UBF8
Background:	PIK4CB phosphorylates phosphatidylinositol (PI) in the first committed step in the production of the second messenger inositol-1,4,5,-trisphosphate (PIP). It may regulate Golgi disintegration/reorganization during mitosis, possibly via its phosphorylation.
Synonyms:	PIK4CB, PI4K-beta, PI4Kbeta, PtdIns 4-kinase beta, NPIK, PI4K92

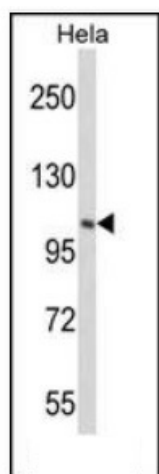


[View online »](#)

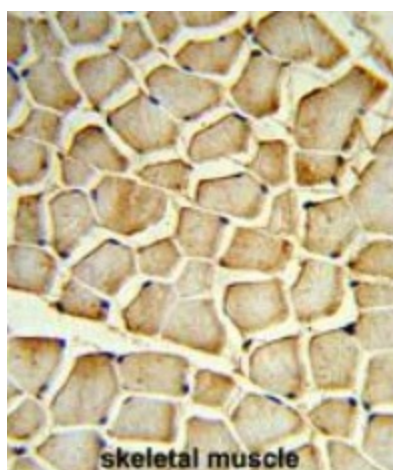
Protein Families: Druggable Genome

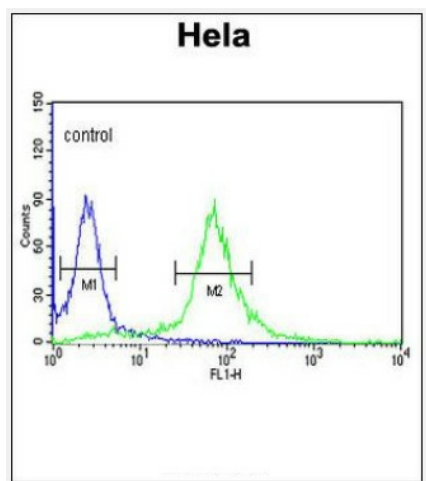
Protein Pathways: Inositol phosphate metabolism, Metabolic pathways, Phosphatidylinositol signaling system

Product images:



Western blot analysis of PIK4CB Antibody (Center) in HeLa cell line lysates (35ug/lane). PIK4CB (arrow) was detected using the purified Pab.





PIK4CB Antibody (Center) flow cytometric analysis of HeLa cells (right histogram) compared to a negative control cell (left histogram). FITC-conjugated goat-anti-rabbit secondary antibodies were used for the analysis.