

## Product datasheet for **AP17636PU-N**

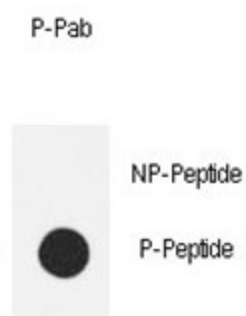
### eNOS (NOS3) pSer1177 Rabbit Polyclonal Antibody

#### Product data:

Product Type:	Primary Antibodies
Recommended Dilution:	ELISA: 1/1,000. Dot blot: 1/500.
Reactivity:	Human
Host:	Rabbit
Clonality:	Polyclonal
Immunogen:	KLH conjugated synthetic phosphopeptide corresponding to amino acid residues surrounding S1177 of human eNos
Specificity:	This antibody reacts to Ser1177 phosphorylated NOS3.
Formulation:	PBS with 0.09% (W/V) sodium azide State: Liquid purified Ig
Concentration:	lot specific
Purification:	Affinity chromatography on Protein A
Conjugation:	Unconjugated
Storage:	Store the antibody undiluted at 2-8°C for one month or (in aliquots) at -20°C for longer. Avoid repeated freezing and thawing.
Stability:	Shelf life: one year from despatch.
Gene Name:	nitric oxide synthase 3
Database Link:	<a href="#">Entrez Gene 4846 Human P29474</a>
Background:	Nitric oxide is a reactive free radical which acts as a biologic mediator in several processes, including neurotransmission and antimicrobial and antitumoral activities. Nitric oxide is synthesized from L-arginine by nitric oxide synthases.
Synonyms:	Endothelial NOS, EC-NOS, NOS type III, Constitutive NOS, eNOS
Protein Families:	Druggable Genome
Protein Pathways:	Alzheimer's disease, Amyotrophic lateral sclerosis (ALS), Arginine and proline metabolism, Calcium signaling pathway, Long-term depression, Metabolic pathways, Pathways in cancer, Small cell lung cancer, VEGF signaling pathway



[View online »](#)

**Product images:****Dot Blot**

Dot blot analysis of anti-Phospho-eNos-S1177 Phospho-specific Pab (AP17636PU-N) on nitrocellulose membrane. 50ng of Phospho-peptide or Non Phospho-peptide per dot were adsorbed. Antibody working concentrations are 0.5ug per ml.