

Product datasheet for **AP17635PU-N**

PHGDH (N-term) Rabbit Polyclonal Antibody

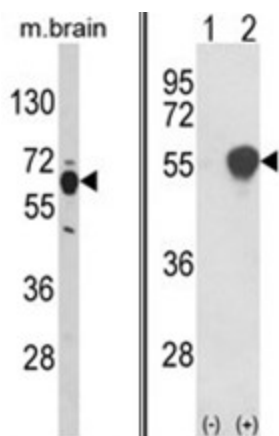
Product data:

Product Type:	Primary Antibodies
Applications:	WB
Recommended Dilution:	ELISA: 1/1,000. Western blotting: 1/50 - 1/100.
Reactivity:	Human
Host:	Rabbit
Clonality:	Polyclonal
Immunogen:	KLH conjugated synthetic peptide selected from the N-terminal region of human PHGDH
Specificity:	This antibody reacts to PHGDH.
Formulation:	PBS with 0.09% (W/V) sodium azide State: Liquid purified Ig
Concentration:	lot specific
Purification:	Saturated Ammonium Sulfate (SAS) precipitation
Conjugation:	Unconjugated
Storage:	Store the antibody undiluted at 2-8°C for one month or (in aliquots) at -20°C for longer. Avoid repeated freezing and thawing.
Stability:	Shelf life: one year from despatch.
Gene Name:	phosphoglycerate dehydrogenase
Database Link:	Entrez Gene 26227 Human O43175
Background:	3-Phosphoglycerate dehydrogenase catalyzes the transition of 3-phosphoglycerate into 3-phosphohydroxypyruvate, which is the first and rate-limiting step in the phosphorylated pathway of serine biosynthesis, using NAD ⁺ /NADH as a cofactor.
Synonyms:	PGDH3, 3-PGDH
Protein Families:	Druggable Genome, Stem cell - Pluripotency
Protein Pathways:	Glycine, serine and threonine metabolism, Metabolic pathways



[View online »](#)

Product images:



(LEFT) Western blot analysis of PHGDH Antibody (N-term) in mouse brain tissue lysates (35ug/lane). PHGDH (arrow) was detected using the purified Pab. (RIGHT) Western blot analysis of PHGDH (arrow) using rabbit polyclonal PHGDH Antibody (N-term). 293 cell lysates (2 ug/lane) either nontransfected (Lane 1) or transiently transfected with the PHGDH gene (Lane 2).