

Product datasheet for **AP17634PU-N**

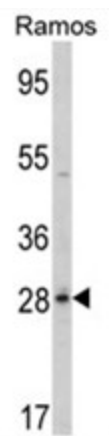
PGLS (C-term) Rabbit Polyclonal Antibody

Product data:

Product Type:	Primary Antibodies
Applications:	WB
Recommended Dilution:	ELISA: 1/1,000. Western blotting: 1/50 - 1/100.
Reactivity:	Human
Host:	Rabbit
Clonality:	Polyclonal
Immunogen:	KLH conjugated synthetic peptide selected from the C-terminal region of human PGLS
Specificity:	This antibody reacts to PGLS.
Formulation:	PBS with 0.09% (W/V) sodium azide State: Liquid purified Ig
Concentration:	lot specific
Purification:	Saturated Ammonium Sulfate (SAS) precipitation
Conjugation:	Unconjugated
Storage:	Store the antibody undiluted at 2-8°C for one month or (in aliquots) at -20°C for longer. Avoid repeated freezing and thawing.
Stability:	Shelf life: one year from despatch.
Gene Name:	6-phosphogluconolactonase
Database Link:	Entrez Gene 25796 Human O95336
Background:	PGLS hydrolyzes 6-phosphogluconolactone to 6-phosphogluconate.
Synonyms:	6-phosphogluconolactonase
Protein Pathways:	Metabolic pathways, Pentose phosphate pathway



[View online »](#)

Product images:

Western blot analysis of PGLS Antibody (C-term) in Ramos cell line lysates (35ug/lane). PGLS (arrow) was detected using the purified Pab.