

Product datasheet for **AP17629PU-N**

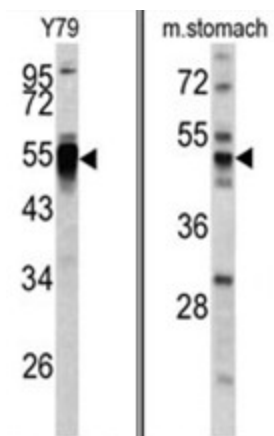
PDIA6 (Center) Rabbit Polyclonal Antibody

Product data:

Product Type:	Primary Antibodies
Applications:	WB
Recommended Dilution:	ELISA: 1/1,000. Western blotting: 1/50 - 1/100.
Reactivity:	Human, Mouse
Host:	Rabbit
Clonality:	Polyclonal
Immunogen:	KLH conjugated synthetic peptide selected from the Center region of human PDIA6
Specificity:	This antibody reacts to PDIA6.
Formulation:	PBS with 0.09% (W/V) sodium azide State: Liquid purified Ig
Concentration:	lot specific
Purification:	Saturated Ammonium Sulfate (SAS) precipitation
Conjugation:	Unconjugated
Storage:	Store the antibody undiluted at 2-8°C for one month or (in aliquots) at -20°C for longer. Avoid repeated freezing and thawing.
Stability:	Shelf life: one year from despatch.
Gene Name:	protein disulfide isomerase family A member 6
Database Link:	Entrez Gene 71853 Mouse Entrez Gene 10130 Human Q15084
Background:	Protein disulfide isomerases (EC 5.3.4.1), such as PDIA6, are endoplasmic reticulum (ER) resident proteins that catalyze formation, reduction, and isomerization of disulfide bonds in proteins and are thought to play a role in folding of disulfide-bonded proteins.
Synonyms:	Protein disulfide-isomerase A6, Protein disulfide isomerase P5, ERP5, ER protein 5, TXNDC7
Protein Families:	Druggable Genome



[View online »](#)

Product images:

(LEFT) Western blot analysis of PDIA6 antibody (Center K159) in Y79 cell line lysates (35ug/lane). PDIA6 (arrow) was detected using the purified Pab. (RIGHT) Western blot analysis of PDIA6 antibody (Center K159) in mouse stomach tissue lysates (35ug/lane). PDIA6 (arrow) was detected using the purified Pab.