

Product datasheet for **AP17627PU-N**

ERp57 (PDIA3) (C-term) Rabbit Polyclonal Antibody

Product data:

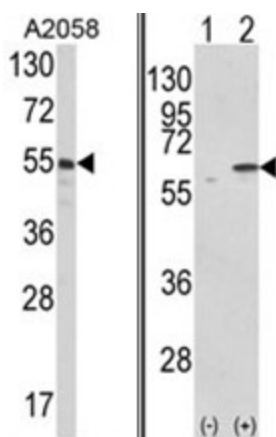
Product Type:	Primary Antibodies
Applications:	WB
Recommended Dilution:	ELISA: 1/1,000. Western blotting: 1/50 - 1/100.
Reactivity:	Human
Host:	Rabbit
Clonality:	Polyclonal
Immunogen:	KLH conjugated synthetic peptide selected from the C-terminal region of human PDIA3
Specificity:	This antibody reacts to PDIA3.
Formulation:	PBS with 0.09% (W/V) sodium azide State: Liquid purified Ig
Concentration:	lot specific
Purification:	Saturated Ammonium Sulfate (SAS) precipitation
Conjugation:	Unconjugated
Storage:	Store the antibody undiluted at 2-8°C for one month or (in aliquots) at -20°C for longer. Avoid repeated freezing and thawing.
Stability:	Shelf life: one year from despatch.
Gene Name:	protein disulfide isomerase family A member 3
Database Link:	Entrez Gene 2923 Human P30101
Background:	PDIA3 is the endoplasmic reticulum that interacts with lectin chaperones calreticulin and calnexin to modulate folding of newly synthesized glycoproteins. The protein was once thought to be a phospholipase; however, it has been demonstrated that the protein actually has protein disulfide isomerase activity. It is thought that complexes of lectins and this protein mediate protein folding by promoting formation of disulfide bonds in their glycoprotein substrates.
Synonyms:	Protein disulfide-isomerase A3, ERP57, ERP60, GRP58, Protein Disulfide Isomerase, ER marker
Protein Families:	Druggable Genome



[View online »](#)

Protein Pathways: Antigen processing and presentation

Product images:



(LEFT) Western blot analysis of PDIA3 Antibody (C-term) in A2058 cell line lysates (35ug/lane). PDIA3 (arrow) was detected using the purified Pab. (RIGHT) Western blot analysis of PDIA3 (arrow) using rabbit polyclonal PDIA3 Antibody (C-term). 293 cell lysates (2 ug/lane) either nontransfected (Lane 1) or transiently transfected with the PDIA3 gene (Lane 2).