

## Product datasheet for **AP17626PU-N**

### ERp57 (PDIA3) (Center) Rabbit Polyclonal Antibody

#### Product data:

Product Type:	Primary Antibodies
Applications:	WB
Recommended Dilution:	ELISA: 1/1,000. Western blotting: 1/50 - 1/100.
Reactivity:	Human
Host:	Rabbit
Clonality:	Polyclonal
Immunogen:	KLH conjugated synthetic peptide selected from the Center region of human PDIA3
Specificity:	This antibody reacts to PDIA3.
Formulation:	PBS with 0.09% (W/V) sodium State: Purified State: Liquid purified Ig
Concentration:	lot specific
Purification:	Prepared by Saturated Ammonium Sulfate (SAS) precipitation followed by dialysis against PBS
Conjugation:	Unconjugated
Storage:	Store the antibody undiluted at 2-8°C for one month or (in aliquots) at -20°C for longer. Avoid repeated freezing and thawing.
Stability:	Shelf life: one year from despatch.
Gene Name:	protein disulfide isomerase family A member 3
Database Link:	<a href="#">Entrez Gene 2923 Human P30101</a>
Background:	PDIA3 is the endoplasmic reticulum that interacts with lectin chaperones calreticulin and calnexin to modulate folding of newly synthesized glycoproteins. The protein was once thought to be a phospholipase; however, it has been demonstrated that the protein actually has protein disulfide isomerase activity. It is thought that complexes of lectins and this protein mediate protein folding by promoting formation of disulfide bonds in their glycoprotein substrates.
Synonyms:	Protein disulfide-isomerase A3, ERP57, ERP60, GRP58, Protein Disulfide Isomerase, ER marker

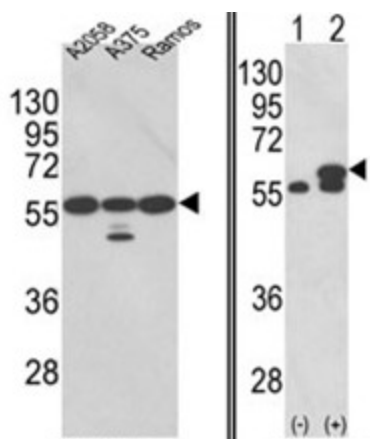


[View online »](#)

Protein Families: Druggable Genome

Protein Pathways: Antigen processing and presentation

**Product images:**



(LEFT) Western blot analysis of PDIA3 Antibody (Center) in A2058, A375, Ramos cell line lysates (35ug/lane). PDIA3 (arrow) was detected using the purified Pab. (2ug/ml) (LEFT) Western blot analysis of PDIA3 (arrow) using rabbit polyclonal PDIA3 Antibody (Center). 293 cell lysates (2 ug/lane) either nontransfected (Lane 1) or transiently transfected with the PDIA3 gene (Lane 2).