

Product datasheet for **AP17622PU-N**

PAX6 (Center) Rabbit Polyclonal Antibody

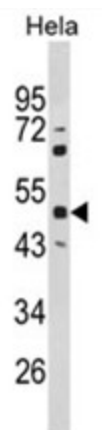
Product data:

Product Type:	Primary Antibodies
Applications:	WB
Recommended Dilution:	ELISA: 1/1,000. Western blotting: 1/100 - 1/500.
Reactivity:	Human
Host:	Rabbit
Clonality:	Polyclonal
Immunogen:	KLH conjugated synthetic peptide selected from the Center region of human PAX6
Specificity:	This antibody reacts to PAX6.
Formulation:	PBS with 0.09% (W/V) sodium azide State: Liquid purified Ig
Concentration:	lot specific
Purification:	Affinity chromatography on Protein A
Conjugation:	Unconjugated
Storage:	Store the antibody undiluted at 2-8°C for one month or (in aliquots) at -20°C for longer. Avoid repeated freezing and thawing.
Stability:	Shelf life: one year from despatch.
Gene Name:	paired box 6
Database Link:	Entrez Gene 5080 Human P26367
Background:	PAX6 is paired box gene 6, one of many human homologs of the Drosophila melanogaster gene prd. In addition to the hallmark feature of this gene family, a conserved paired box domain, the encoded protein also contains a homeo box domain. Both domains are known to bind DNA, and function as regulators of gene transcription.
Synonyms:	Pax-6, Aniridia type II protein, AN2, Oculorhombin
Protein Families:	Adult stem cells, Druggable Genome, Embryonic stem cells, Transcription Factors
Protein Pathways:	Maturity onset diabetes of the young



[View online »](#)

Product images:



Western blot analysis of PAX6 Antibody (Center) in HeLa cell line lysates (35ug/lane). PAX6 (arrow) was detected using the purified Pab.