

Product datasheet for **AP17621PU-N**

PAX4 (Center) Rabbit Polyclonal Antibody

Product data:

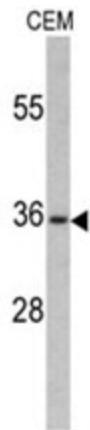
Product Type:	Primary Antibodies
Applications:	WB
Recommended Dilution:	ELISA: 1/1,000. Western blotting: 1/50 - 1/100.
Reactivity:	Human
Host:	Rabbit
Clonality:	Polyclonal
Immunogen:	KLH conjugated synthetic peptide selected from the ?-terminal region of human PAX4 Antibody (Center).
Specificity:	This antibody reacts to PAX4.
Formulation:	PBS with 0.09% (W/V) sodium azide State: Liquid purified Ig
Concentration:	lot specific
Purification:	Saturated Ammonium Sulfate (SAS) precipitation
Conjugation:	Unconjugated
Storage:	Store the antibody undiluted at 2-8°C for one month or (in aliquots) at -20°C for longer. Avoid repeated freezing and thawing.
Stability:	Shelf life: one year from despatch.
Gene Name:	paired box 4
Database Link:	Entrez Gene 5078 Human O43316
Background:	PAX4 is a member of the paired box (PAX) family of transcription factors. These proteins play critical roles during fetal development and cancer growth. The paired box 4 gene is involved in pancreatic islet development and mouse studies have demonstrated a role for this gene in differentiation of insulin-producing beta cells.
Synonyms:	Pax-4
Protein Families:	Embryonic stem cells, ES Cell Differentiation/IPS, Transcription Factors



[View online »](#)

Protein Pathways: Maturity onset diabetes of the young

Product images:



Western blot analysis of PAX4 antibody (Center) in CEM cell line lysates (35ug/lane). PAX4 (arrow) was detected using the purified Pab.