

Product datasheet for **AP17618PU-N**

SERPINB2 (Center) Rabbit Polyclonal Antibody

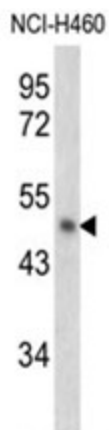
Product data:

Product Type:	Primary Antibodies
Applications:	WB
Recommended Dilution:	ELISA: 1/1,000. Western blotting: 1/50 - 1/100.
Reactivity:	Human
Host:	Rabbit
Clonality:	Polyclonal
Immunogen:	KLH conjugated synthetic peptide selected from the Center region of human PAI2
Specificity:	This antibody reacts to PAI2.
Formulation:	PBS with 0.09% (W/V) sodium azide State: Liquid purified Ig
Concentration:	lot specific
Purification:	Saturated Ammonium Sulfate (SAS) precipitation
Conjugation:	Unconjugated
Storage:	Store the antibody undiluted at 2-8°C for one month or (in aliquots) at -20°C for longer. Avoid repeated freezing and thawing.
Stability:	Shelf life: one year from despatch.
Gene Name:	serpin family B member 2
Database Link:	Entrez Gene 5055 Human P05120
Background:	PAI2 inhibits urokinase-type plasminogen activator. The monocyte derived PAI-2 is distinct from the endothelial cell-derived PAI-1.
Synonyms:	Serpin B2, PAI-2, Plasminogen activator inhibitor 2, PLANH2
Protein Families:	Druggable Genome, Secreted Protein



[View online »](#)

Product images:



Western blot analysis of PAI2 antibody (Center) in NCI-H460 cell line lysates (35ug/lane). PAI2 (arrow) was detected using the purified Pab.