

Product datasheet for **AP17615PU-N**

P4HB (C-term) Rabbit Polyclonal Antibody

Product data:

Product Type:	Primary Antibodies
Applications:	FC, IHC, WB
Recommended Dilution:	ELISA: >1/1,000 (peptide ELISA only) Western blotting: 1/500-1/1000. Flow Cytometry: 1/10-1/50. Immunohistochemistry: 1/50-1/100.
Reactivity:	Human
Host:	Rabbit
Clonality:	Polyclonal
Immunogen:	KLH conjugated synthetic peptide between 436~464 amino acids from the C-terminal region of Human P4HB.
Specificity:	This antibody recognizes Protein Disulfide Isomerase.
Formulation:	PBS with 0.09% (W/V) Sodium Azide as preservative State: Liquid purified Ig fraction
Concentration:	lot specific
Purification:	Saturated Ammonium Sulfate (SAS) precipitation followed by dialysis against PBS
Conjugation:	Unconjugated
Storage:	Store the antibody undiluted at 2-8°C for one month or (in aliquots) at -20°C for longer. Avoid repeated freezing and thawing.
Stability:	Shelf life: one year from despatch.
Gene Name:	prolyl 4-hydroxylase subunit beta
Database Link:	Entrez Gene 5034 Human P07237



[View online »](#)

Background:

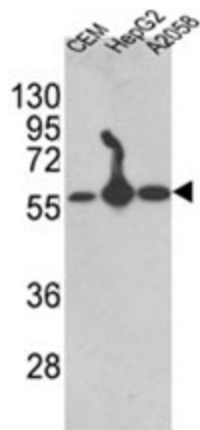
P4HB is a highly abundant multifunctional enzyme that belongs to the protein disulfide isomerase family. When present as a tetramer consisting of two alpha and two beta subunits, this enzyme is involved in hydroxylation of prolyl residues in procollagen. This enzyme is also a disulfide isomerase containing two thioredoxin domains that catalyze the formation, breakage and rearrangement of disulfide bonds. Other known functions include its ability to act as a chaperone that inhibits aggregation of misfolded proteins in a concentration-dependent manner, its ability to bind thyroid hormone, its role in both the influx and efflux of S-nitrosothiol-bound nitric oxide, and its function as a subunit of the microsomal triglyceride transfer protein complex.

Synonyms:

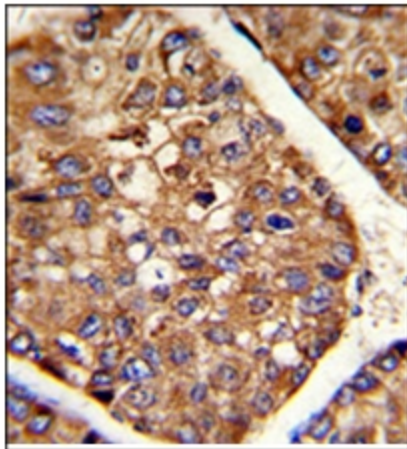
ERBA2L, PDIA1, PO4DB, Protein disulfide-isomerase, ER marker

Protein Families:

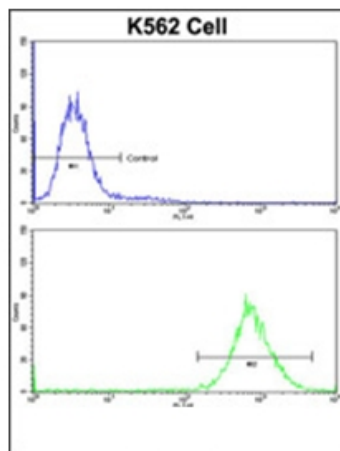
Druggable Genome

Product images:

Western blot analysis of P4HB antibody (C-term) in CEM, HepG2, A2058 cell line lysates (35 ug/lane). P4HB (arrow) was detected using the purified Pab. (2ug/ml)



P4HB antibody staining of Formalin-Fixed and paraffin-Embedded Human hepatocarcinoma using peroxidase-conjugated to the secondary antibody, followed by DAB staining. Clinical relevance has not been evaluated.



Flow Cytometric analysis of K562 cells using P4HB Antibody (C-term) (bottom histogram) compared to a Negative Control cell (top histogram). FITC-conjugated goat-anti-Rabbit secondary antibodies were used for the analysis.