

Product datasheet for **AP17609PU-N**

Alpha 1 Acid Glycoprotein (ORM1) (C-term) Rabbit Polyclonal Antibody

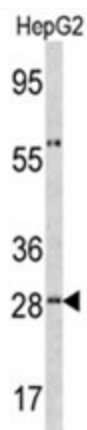
Product data:

Product Type:	Primary Antibodies
Applications:	WB
Recommended Dilution:	ELISA: 1/1,000. Western blotting: 1/50 - 1/100.
Reactivity:	Human
Host:	Rabbit
Clonality:	Polyclonal
Immunogen:	KLH conjugated synthetic peptide selected from the C-terminal region of human ORM1
Specificity:	This antibody reacts to Alpha-1-acid glycoprotein 1.
Formulation:	PBS with 0.09% (W/V) sodium azide State: Liquid purified Ig
Concentration:	lot specific
Purification:	Saturated Ammonium Sulfate (SAS) precipitation
Conjugation:	Unconjugated
Storage:	Store the antibody undiluted at 2-8°C for one month or (in aliquots) at -20°C for longer. Avoid repeated freezing and thawing.
Stability:	Shelf life: one year from despatch.
Gene Name:	orosomuroid 1
Database Link:	Entrez Gene 5004 Human P02763
Background:	ORM1 is a key acute phase plasma protein. Because of its increase due to acute inflammation, this protein is classified as an acute-phase reactant. The specific function of this protein has not yet been determined; however, it may be involved in aspects of immunosuppression.
Synonyms:	Orosomuroid-1, OMD1, Alpha-1-acid glycoprotein 1
Protein Families:	Druggable Genome, Secreted Protein



[View online »](#)

Product images:



Western blot analysis of ORM1 antibody (C-term) in HepG2 cell line lysates (35ug/lane). ORM1 (arrow) was detected using the purified Pab.