

Product datasheet for **AP17604PU-N**

NUP62 (C-term) Rabbit Polyclonal Antibody

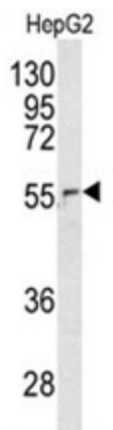
Product data:

Product Type:	Primary Antibodies
Applications:	WB
Recommended Dilution:	ELISA: 1/1,000. Western blotting: 1/50 - 1/100.
Reactivity:	Human
Host:	Rabbit
Clonality:	Polyclonal
Immunogen:	KLH conjugated synthetic peptide selected from the C-terminal region of human NUP62
Specificity:	This antibody reacts to NUP62.
Formulation:	PBS with 0.09% (W/V) sodium azide State: Liquid purified Ig
Concentration:	lot specific
Purification:	Saturated Ammonium Sulfate (SAS) precipitation
Conjugation:	Unconjugated
Storage:	Store the antibody undiluted at 2-8°C for one month or (in aliquots) at -20°C for longer. Avoid repeated freezing and thawing.
Stability:	Shelf life: one year from despatch.
Gene Name:	nucleoporin 62kDa
Database Link:	Entrez Gene 23636 Human P37198
Background:	NUP62 is a massive structure that extends across the nuclear envelope, forming a gateway that regulates the flow of macromolecules between the nucleus and the cytoplasm. Nucleoporins are the main components of the nuclear pore complex in eukaryotic cells. This protein is a member of the FG-repeat containing nucleoporins and is localized to the nuclear pore central plug. The protein associates with the importin alpha/beta complex which is involved in the import of proteins containing nuclear localization signals.
Synonyms:	Nuclear pore glycoprotein p62, 62 kDa nucleoporin
Protein Families:	Druggable Genome, Transcription Factors



[View online »](#)

Product images:



Western blot analysis of NUP62 antibody (C-term E507) in HepG2 cell line lysates (35ug/lane). NUP62 (arrow) was detected using the purified Pab.