

Product datasheet for **AP17603PU-N**

NUP155 (N-term) Rabbit Polyclonal Antibody

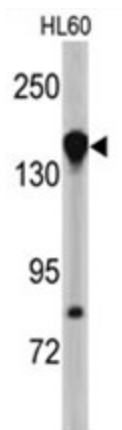
Product data:

Product Type:	Primary Antibodies
Applications:	WB
Recommended Dilution:	ELISA: 1/1,000. Western blotting: 1/50 - 1/100.
Reactivity:	Human
Host:	Rabbit
Clonality:	Polyclonal
Immunogen:	KLH conjugated synthetic peptide selected from the N-terminal region of human NUP155
Specificity:	This antibody reacts to NUP155.
Formulation:	PBS with 0.09% (W/V) sodium azide State: Liquid purified Ig
Concentration:	lot specific
Purification:	Saturated Ammonium Sulfate (SAS) precipitation
Conjugation:	Unconjugated
Storage:	Store the antibody undiluted at 2-8°C for one month or (in aliquots) at -20°C for longer. Avoid repeated freezing and thawing.
Stability:	Shelf life: one year from despatch.
Gene Name:	nucleoporin 155kDa
Database Link:	Entrez Gene 9631 Human O75694
Background:	Nucleoporins are the main components of the nuclear pore complex (NPC) of eukaryotic cells. They are involved in the bidirectional trafficking of molecules, especially mRNAs and proteins, between the nucleus and the cytoplasm. The protein does not contain the typical FG repeat sequences found in most vertebrate nucleoporins.
Synonyms:	KIAA0791, Nucleoporin Nup155



[View online »](#)

Product images:



Western blot analysis of NUP155 antibody (N-term) in HL60 cell line lysates (35ug/lane). NUP155 (arrow) was detected using the purified Pab.