

Product datasheet for **AP17593PU-N**

NKRF (Center) Rabbit Polyclonal Antibody

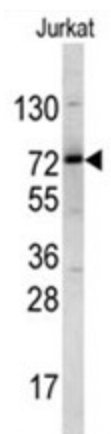
Product data:

Product Type:	Primary Antibodies
Applications:	WB
Recommended Dilution:	ELISA: 1/1,000. Western blotting: 1/50 - 1/100.
Reactivity:	Human
Host:	Rabbit
Clonality:	Polyclonal
Immunogen:	KLH conjugated synthetic peptide selected from the Center region of human NKRF
Specificity:	This antibody reacts to NKRF.
Formulation:	PBS with 0.09% (W/V) sodium azide State: Liquid purified Ig
Concentration:	lot specific
Purification:	Saturated Ammonium Sulfate (SAS) precipitation
Conjugation:	Unconjugated
Storage:	Store the antibody undiluted at 2-8°C for one month or (in aliquots) at -20°C for longer. Avoid repeated freezing and thawing.
Stability:	Shelf life: one year from despatch.
Gene Name:	NFKB repressing factor
Database Link:	Entrez Gene 55922 Human O15226
Background:	NKRF is a transcription factor that interacts with specific negative regulatory elements (NREs) to mediate transcriptional repression of certain NK-kappa-B-responsive genes. The protein localizes predominantly to the nucleolus with a small fraction found in the nucleoplasm and cytoplasm.
Synonyms:	ITBA4, NRF
Protein Families:	Transcription Factors



[View online »](#)

Product images:



Western blot analysis of NKRF antibody (Center) in Jurkat cell line lysates (35ug/lane). NKRF (arrow) was detected using the purified Pab.