

Product datasheet for **AP17581PU-N**

MT ND5 (ND5) (C-term) Rabbit Polyclonal Antibody

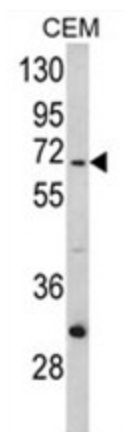
Product data:

Product Type:	Primary Antibodies
Applications:	WB
Recommended Dilution:	ELISA: 1/1,000. Western blotting: 1/100 - 1/500.
Reactivity:	Human
Host:	Rabbit
Clonality:	Polyclonal
Immunogen:	KLH conjugated synthetic peptide selected from the C-terminal region of human ND5
Specificity:	This antibody reacts to ND5.
Formulation:	PBS with 0.09% (W/V) sodium azide State: Liquid purified Ig
Concentration:	lot specific
Purification:	Affinity chromatography on Protein A
Conjugation:	Unconjugated
Storage:	Store the antibody undiluted at 2-8°C for one month or (in aliquots) at -20°C for longer. Avoid repeated freezing and thawing.
Stability:	Shelf life: one year from despatch.
Gene Name:	mitochondrially encoded NADH dehydrogenase 5
Database Link:	Entrez Gene 4540 Human P03915
Background:	Core subunit of the mitochondrial membrane respiratory chain NADH dehydrogenase (Complex I) that is believed to belong to the minimal assembly required for catalysis. Complex I functions in the transfer of electrons from NADH to the respiratory chain. The immediate electron acceptor for the enzyme is believed to be ubiquinone.
Synonyms:	NADH-ubiquinone oxidoreductase chain 5, MT-ND5, MTND5, NADH5



[View online »](#)

Product images:



Western blot analysis of ND5 Antibody (C-term) in CEM cell line lysates (35ug/lane). ND5 (arrow) was detected using the purified Pab.