

Product datasheet for **AP17579PU-N**

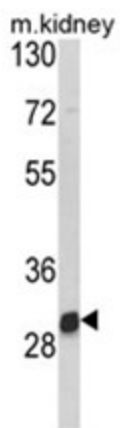
NAT2 (C-term) Rabbit Polyclonal Antibody

Product data:

Product Type:	Primary Antibodies
Applications:	WB
Recommended Dilution:	ELISA: 1/1,000. Western blotting: 1/100 - 1/500.
Reactivity:	Human, Mouse
Host:	Rabbit
Clonality:	Polyclonal
Immunogen:	KLH conjugated synthetic peptide selected from the C-terminal region of human NAT2
Specificity:	This antibody reacts to NAT2.
Formulation:	PBS with 0.09% (W/V) sodium azide State: Liquid purified Ig
Concentration:	lot specific
Purification:	Affinity chromatography on Protein A
Conjugation:	Unconjugated
Storage:	Store the antibody undiluted at 2-8°C for one month or (in aliquots) at -20°C for longer. Avoid repeated freezing and thawing.
Stability:	Shelf life: one year from despatch.
Gene Name:	N-acetyltransferase 2 (arylamine N-acetyltransferase)
Database Link:	Entrez Gene 17961 Mouse Entrez Gene 10 Human P11245
Background:	NAT2 is an enzyme that functions to both activate and deactivate arylamine and hydrazine drugs and carcinogens.
Synonyms:	Arylamine N-acetyltransferase 2, AAC2
Protein Families:	Transmembrane
Protein Pathways:	Caffeine metabolism, Drug metabolism - other enzymes, Metabolic pathways



[View online »](#)

Product images:

Western blot analysis of NAT2 Antibody (C-term) in mouse kidney tissue lysates (35ug/lane). NAT2 (arrow) was detected using the purified Pab.