

Product datasheet for **AP17576PU-N**

MyoGEF (PLEKHG6) (N-term) Rabbit Polyclonal Antibody

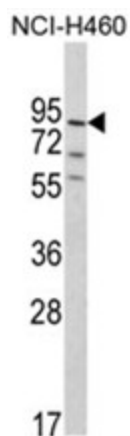
Product data:

Product Type:	Primary Antibodies
Applications:	WB
Recommended Dilution:	ELISA: 1/1,000. Western blotting: 1/100 - 1/500.
Reactivity:	Human
Host:	Rabbit
Clonality:	Polyclonal
Immunogen:	KLH conjugated synthetic peptide selected from the N-terminal region of human MyoGEF
Specificity:	This antibody reacts to MyoGEF.
Formulation:	PBS with 0.09% (W/V) sodium azide State: Liquid purified Ig
Concentration:	lot specific
Purification:	Affinity chromatography on Protein A
Conjugation:	Unconjugated
Storage:	Store the antibody undiluted at 2-8°C for one month or (in aliquots) at -20°C for longer. Avoid repeated freezing and thawing.
Stability:	Shelf life: one year from despatch.
Gene Name:	pleckstrin homology and RhoGEF domain containing G6
Database Link:	Entrez Gene 55200 Human Q3KR16
Background:	Guanine nucleotide exchange factor activating the small GTPase RHOA, which, in turn, induces myosin filament formation. It Also activates RHOG and does not activate RAC1, or to a much lower extent than RHOA and RHOG. Its part of a functional unit, involving PLEKHG6, MYH10 and RHOA, at the cleavage furrow to advance furrow ingression during cytokinesis. In epithelial cells, It is required for the formation of microvilli and membrane ruffles on the apical pole. Along with EZR, it is required for normal macropinocytosis.
Synonyms:	PLEKHG6



[View online »](#)

Product images:



Western blot analysis of MyoGEF Antibody (N-term) in NCI-H460 cell line lysates (35ug/lane). MyoGEF (arrow) was detected using the purified Pab.