

Product datasheet for **AP17568PU-N**

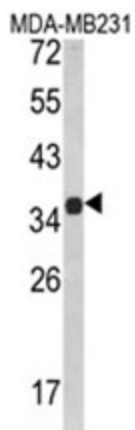
MSRB2 Rabbit Polyclonal Antibody

Product data:

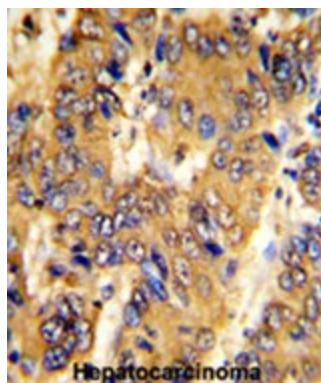
Product Type:	Primary Antibodies
Applications:	IHC, WB
Recommended Dilution:	ELISA: 1/1,000. Western blotting: 1/100 - 1/500. Immunohistochemistry on paraffin sections: 1/50 - 1/100.
Reactivity:	Human
Host:	Rabbit
Clonality:	Polyclonal
Immunogen:	KLH conjugated synthetic peptide selected from the Center region of human MSRB2
Specificity:	This antibody reacts to MSRB2.
Formulation:	PBS with 0.09% (W/V) sodium azide State: Liquid purified Ig
Concentration:	lot specific
Purification:	Affinity chromatography on Protein A
Conjugation:	Unconjugated
Storage:	Store the antibody undiluted at 2-8°C for one month or (in aliquots) at -20°C for longer. Avoid repeated freezing and thawing.
Stability:	Shelf life: one year from despatch.
Gene Name:	methionine sulfoxide reductase B2
Database Link:	Entrez Gene 22921 Human Q9Y3D2
Background:	MSRB2 catalyzes the reduction of free and protein-bound methionine sulfoxide to methionine.
Synonyms:	CBS-1, MSRB, CGI-131
Protein Families:	Transcription Factors

[View online »](#)

Product images:



Western blot analysis of MSRB2 Antibody (Center) in MDA-MB231 cell line lysates (35ug/lane). MSRB2 (arrow) was detected using the purified Pab.



Formalin-fixed and paraffin-embedded human hepatocarcinoma with MSRB2 Antibody (Center), which was peroxidase-conjugated to the secondary antibody, followed by DAB staining.