

Product datasheet for **AP17565PU-N**

Dhfr (C-term) Rabbit Polyclonal Antibody

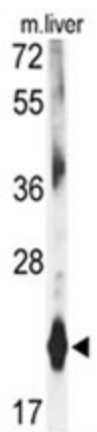
Product data:

Product Type:	Primary Antibodies
Applications:	WB
Recommended Dilution:	ELISA: 1/1,000. Western blotting: 1/50 - 1/100.
Reactivity:	Mouse
Host:	Rabbit
Clonality:	Polyclonal
Immunogen:	KLH conjugated synthetic peptide selected from the C-terminal region of mouse DHFR
Specificity:	This antibody reacts to DHFR / DHFRP1.
Formulation:	PBS with 0.09% (W/V) sodium azide State: Liquid purified Ig
Concentration:	lot specific
Purification:	Saturated Ammonium Sulfate (SAS) precipitation
Conjugation:	Unconjugated
Storage:	Store the antibody undiluted at 2-8°C for one month or (in aliquots) at -20°C for longer. Avoid repeated freezing and thawing.
Stability:	Shelf life: one year from despatch.
Gene Name:	dihydrofolate reductase
Database Link:	Entrez Gene 13361 Mouse P00375
Background:	Dihydrofolate reductase converts dihydrofolate into tetrahydrofolate, a methyl group shuttle required for the de novo synthesis of purines, thymidylic acid, and certain amino acids. While the functional dihydrofolate reductase gene has been mapped to chromosome 5, multiple intronless processed pseudogenes or dihydrofolate reductase-like genes have been identified on separate chromosomes. Dihydrofolate reductase deficiency has been linked to megaloblastic anemia.
Synonyms:	Dihydrofolate reductase



[View online »](#)

Product images:



Western blot analysis of DHFR antibody (C-term) in mouse liver tissue lysates (35ug/lane). KLF4 (arrow) was detected using the purified Pab.