

Product datasheet for **AP17563PU-N**

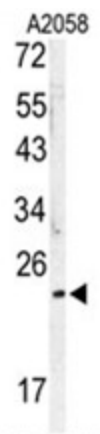
MOBK1B (MOB1A) (C-term) Rabbit Polyclonal Antibody

Product data:

Product Type:	Primary Antibodies
Applications:	WB
Recommended Dilution:	ELISA: 1/1,000. Western blotting: 1/50 - 1/100.
Reactivity:	Human
Host:	Rabbit
Clonality:	Polyclonal
Immunogen:	KLH conjugated synthetic peptide selected from the C-terminal region of human MOBKL1B
Specificity:	This antibody reacts to MOBKL1B.
Formulation:	PBS with 0.09% (W/V) sodium azide State: Liquid purified Ig
Concentration:	lot specific
Purification:	Saturated Ammonium Sulfate (SAS) precipitation
Conjugation:	Unconjugated
Storage:	Store the antibody undiluted at 2-8°C for one month or (in aliquots) at -20°C for longer. Avoid repeated freezing and thawing.
Stability:	Shelf life: one year from despatch.
Gene Name:	MOB kinase activator 1A
Database Link:	Entrez Gene 55233 Human Q9H8S9
Background:	MOBKL1B stimulates the kinase activity of STK38 and STK38L.
Synonyms:	Mob1 homolog 1B, Mob1 alpha, Protein Mob4B, C2orf6, MOB4B, MOBK1B
Protein Families:	Druggable Genome



[View online »](#)

Product images:

Western blot analysis of MOBKL1B antibody (C-term) in A2058 cell line lysates (35ug/lane). MOBKL1B (arrow) was detected using the purified Pab.