

Product datasheet for **AP17557PU-N**

MDH2 Rabbit Polyclonal Antibody

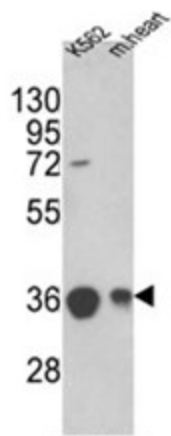
Product data:

Product Type:	Primary Antibodies
Applications:	WB
Recommended Dilution:	ELISA: 1/1,000. Western blotting: 1/50 - 1/100.
Reactivity:	Human, Mouse
Host:	Rabbit
Clonality:	Polyclonal
Immunogen:	KLH conjugated synthetic peptide selected from the Center region of human MDH2
Specificity:	This antibody reacts to MDH2.
Formulation:	PBS with 0.09% (W/V) sodium azide State: Liquid purified Ig
Concentration:	lot specific
Purification:	Saturated Ammonium Sulfate (SAS) precipitation
Conjugation:	Unconjugated
Storage:	Store the antibody undiluted at 2-8°C for one month or (in aliquots) at -20°C for longer. Avoid repeated freezing and thawing.
Stability:	Shelf life: one year from despatch.
Gene Name:	malate dehydrogenase 2
Database Link:	Entrez Gene 17448 Mouse Entrez Gene 4191 Human P40926
Background:	MDH2 is localized to the mitochondria and may play pivotal roles in the malate-aspartate shuttle that operates in the metabolic coordination between cytosol and mitochondria.
Synonyms:	Malate dehydrogenase, mitochondrial
Protein Families:	Druggable Genome
Protein Pathways:	Citrate cycle (TCA cycle), Glyoxylate and dicarboxylate metabolism, Metabolic pathways, Pyruvate metabolism



[View online »](#)

Product images:



Western blot analysis of MDH2 Antibody (Center) in K562 cell line and mouse heart tissue lysates (35ug/lane). MDH2 (arrow) was detected using the purified Pab. (2ug/ml).