

Product datasheet for **AP17556PU-N**

MDH1 (C-term) Rabbit Polyclonal Antibody

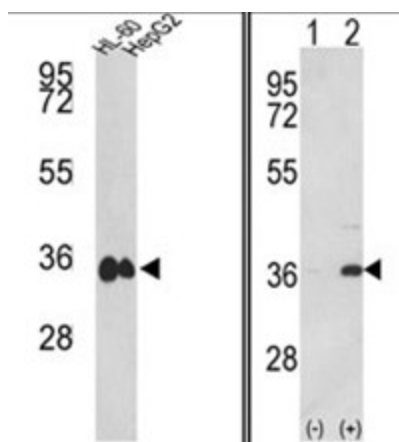
Product data:

Product Type:	Primary Antibodies
Applications:	WB
Recommended Dilution:	ELISA: 1/1,000. Western blotting: 1/50 - 1/100.
Reactivity:	Human
Host:	Rabbit
Clonality:	Polyclonal
Immunogen:	KLH conjugated synthetic peptide selected from the C-terminal region of human MDH1
Specificity:	This antibody reacts to MDHA.
Formulation:	PBS with 0.09% (W/V) sodium azide State: Liquid purified Ig
Concentration:	lot specific
Purification:	Saturated Ammonium Sulfate (SAS) precipitation
Conjugation:	Unconjugated
Storage:	Store the antibody undiluted at 2-8°C for one month or (in aliquots) at -20°C for longer. Avoid repeated freezing and thawing.
Stability:	Shelf life: one year from despatch.
Gene Name:	malate dehydrogenase 1
Database Link:	Entrez Gene 4190 Human P40925
Background:	MDH1 is localized to the cytoplasm and may play pivotal roles in the malate-aspartate shuttle that operates in the metabolic coordination between cytosol and mitochondria.
Synonyms:	MDHA, Malate dehydrogenase, cytoplasmic
Protein Families:	Druggable Genome
Protein Pathways:	Citrate cycle (TCA cycle), Glyoxylate and dicarboxylate metabolism, Metabolic pathways, Pyruvate metabolism



[View online »](#)

Product images:



(LEFT) Western blot analysis of MDH1 Antibody (C-term) in HL-60, HepG2 cell line lysates (35ug/lane). MDH1 (arrow) was detected using the purified Pab. (RIGHT) Western blot analysis of MDH1 (arrow) using rabbit polyclonal MDH1 Antibody (C-term). 293 cell lysates (2 ug/lane) either nontransfected (Lane 1) or transiently transfected with the MDH1 gene (Lane 2).