

## Product datasheet for **AP17555PU-N**

### Malignant T cell amplified sequence 1 (MCTS1) (N-term) Rabbit Polyclonal Antibody

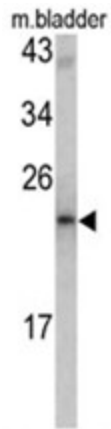
#### Product data:

Product Type:	Primary Antibodies
Applications:	WB
Recommended Dilution:	ELISA: 1/1,000. Western blotting: 1/50 - 1/100.
Reactivity:	Human, Mouse
Host:	Rabbit
Clonality:	Polyclonal
Immunogen:	KLH conjugated synthetic peptide selected from the N-terminal region of human MCTS1
Specificity:	This antibody reacts to MCTS1.
Formulation:	PBS with 0.09% (W/V) sodium azide State: Liquid purified Ig
Concentration:	lot specific
Purification:	Saturated Ammonium Sulfate (SAS) precipitation
Conjugation:	Unconjugated
Storage:	Store the antibody undiluted at 2-8°C for one month or (in aliquots) at -20°C for longer. Avoid repeated freezing and thawing.
Stability:	Shelf life: one year from despatch.
Gene Name:	malignant T-cell amplified sequence 1
Database Link:	<a href="#">Entrez Gene 68995 Mouse</a> <a href="#">Entrez Gene 28985 Human</a> <a href="#">Q9ULC4</a>
Background:	MCTS1 play a role in cell cycle regulation; decreases cell doubling time and anchorage-dependent growth; shortens the duration of G1 transit time and G1/S transition.
Synonyms:	Malignant T cell amplified sequence 1, MCTS1, MCT1, MCT-1
Protein Families:	Druggable Genome



[View online »](#)

## Product images:



Western blot analysis of MCT-1 antibody (N-term) in mouse bladder tissue lysates (35ug/lane). MCTS1 (arrow) was detected using the purified Pab.