

## Product datasheet for **AP17554PU-N**

### M-CSF (CSF1) Rabbit Polyclonal Antibody

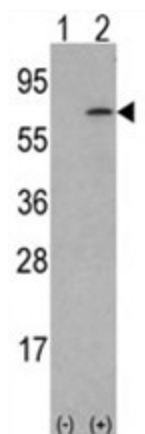
#### Product data:

Product Type:	Primary Antibodies
Applications:	WB
Recommended Dilution:	ELISA: 1/1,000. Western blotting: 1/50 - 1/100.
Reactivity:	Human
Host:	Rabbit
Clonality:	Polyclonal
Immunogen:	KLH conjugated synthetic peptide selected from the Center region of human M-CSF
Specificity:	This antibody reacts to Macrophage Colony Stimulating Factor (M-CSF).
Formulation:	PBS with 0.09% (W/V) sodium azide State: Liquid purified Ig
Concentration:	lot specific
Purification:	Saturated Ammonium Sulfate (SAS) precipitation
Conjugation:	Unconjugated
Storage:	Store the antibody undiluted at 2-8°C for one month or (in aliquots) at -20°C for longer. Avoid repeated freezing and thawing.
Stability:	Shelf life: one year from despatch.
Gene Name:	colony stimulating factor 1
Database Link:	<a href="#">Entrez Gene 1435 Human P09603</a>
Background:	CSF1 is a cytokine that controls the production, differentiation, and function of macrophages. The active form of the protein is found extracellularly as a disulfide-linked homodimer, and is thought to be produced by proteolytic cleavage of membrane-bound precursors. This protein may be involved in development of the placenta.
Synonyms:	CSF1, MCSF, Macrophage colony-stimulating factor 1, Macrophage Colony Stimulating Factor
Protein Families:	Druggable Genome, ES Cell Differentiation/IPS, Secreted Protein, Transmembrane
Protein Pathways:	Cytokine-cytokine receptor interaction, Hematopoietic cell lineage



[View online »](#)

## Product images:



Western blot analysis of M-CSF (arrow) using rabbit polyclonal M-CSF Antibody (Center). 293 cell lysates (2 ug/lane) either nontransfected (Lane 1) or transiently transfected with the MCSF gene (Lane 2) (Origene Technologies).