

Product datasheet for **AP17553PU-N**

MCCC2 (Center) Rabbit Polyclonal Antibody

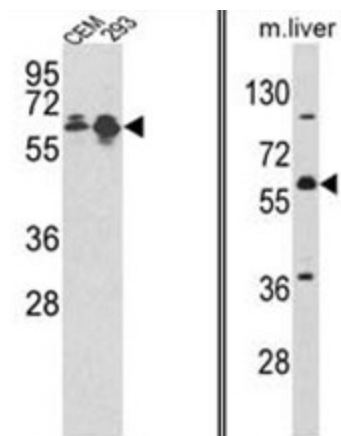
Product data:

Product Type:	Primary Antibodies
Applications:	WB
Recommended Dilution:	ELISA: 1/1,000. Western blotting: 1/100 - 1/500.
Reactivity:	Human, Mouse
Host:	Rabbit
Clonality:	Polyclonal
Immunogen:	KLH conjugated synthetic peptide selected from the Center region of human MCCC2.
Specificity:	This antibody reacts to MCCC2.
Formulation:	PBS containing 0.09% (W/V) sodium azide as preservative State: Liquid purified Ig fraction
Concentration:	lot specific
Purification:	Affinity chromatography on Protein A
Conjugation:	Unconjugated
Storage:	Store the antibody undiluted at 2-8°C for one month or (in aliquots) at -20°C for longer. Avoid repeated freezing and thawing.
Stability:	Shelf life: one year from despatch.
Gene Name:	methylcrotonoyl-CoA carboxylase 2
Database Link:	Entrez Gene 78038 Mouse Entrez Gene 64087 Human Q9HCC0
Background:	MCCC2 is the small subunit of 3-methylcrotonyl-CoA carboxylase. This enzyme functions as a heterodimer and catalyzes the carboxylation of 3-methylcrotonyl-CoA to form 3-methylglutaconyl-CoA.
Synonyms:	MCCB, MCCase subunit beta, 3-methylcrotonoyl-CoA carboxylase 2
Protein Families:	Druggable Genome
Protein Pathways:	Metabolic pathways, Valine, leucine and isoleucine degradation



[View online »](#)

Product images:



(LEFT) Western blot analysis of MCCC2 Antibody (Center) in CEM, 293 cell line lysates (35ug/lane). MCCC2 (arrow) was detected using the purified Pab. (RIGHT) Western blot analysis of MCCC2 Antibody (Center) in mouse liver tissue lysates (35ug/lane). MCCC2 (arrow) was detected using the purified Pab.