

Product datasheet for **AP17551PU-N**

EMAP II (AIMP1) (C-term) Rabbit Polyclonal Antibody

Product data:

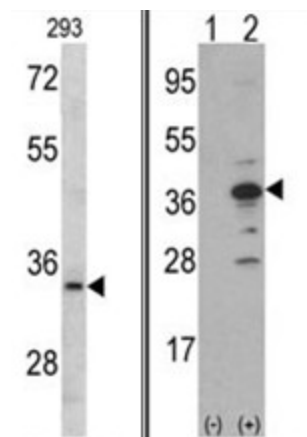
Product Type:	Primary Antibodies
Applications:	WB
Recommended Dilution:	ELISA: 1/1,000. Western blotting: 1/50 - 1/100.
Reactivity:	Human
Host:	Rabbit
Clonality:	Polyclonal
Immunogen:	KLH conjugated synthetic peptide selected from the C-terminal region of human MCA1
Specificity:	This antibody reacts to MCA1.
Formulation:	PBS with 0.09% (W/V) sodium azide State: Liquid purified Ig
Concentration:	lot specific
Purification:	Saturated Ammonium Sulfate (SAS) precipitation
Conjugation:	Unconjugated
Storage:	Store the antibody undiluted at 2-8°C for one month or (in aliquots) at -20°C for longer. Avoid repeated freezing and thawing.
Stability:	Shelf life: one year from despatch.
Gene Name:	aminoacyl tRNA synthetase complex interacting multifunctional protein 1
Database Link:	Entrez Gene 9255 Human Q12904
Background:	MCA1 is a cytokine that is specifically induced by apoptosis, and it is involved in the control of angiogenesis, inflammation, and wound healing. The release of this cytokine renders the tumor-associated vasculature sensitive to tumor necrosis factor. The precursor protein is identical to the p43 subunit, which is associated with the multi-tRNA synthetase complex, and it modulates aminoacylation activity of tRNA synthetase in normal cells. This protein is also involved in the stimulation of inflammatory responses after proteolytic cleavage in tumor cells.
Synonyms:	EMAP-2, EMAP-II, AIMP1



[View online »](#)

Protein Families: Druggable Genome

Product images:



(LEFT) Western blot analysis of MCA1 antibody (C-term) in 293 cell line lysates (35ug/lane). MCA1 (arrow) was detected using the purified Pab.
(RIGHT) Western blot analysis of MCA1 (arrow) using rabbit polyclonal MCA1 Antibody (N-term). 293 cell lysates (2 ug/lane) either nontransfected (Lane 1) or transiently transfected with the MCA1 gene (Lane 2) (Origene Technologies).